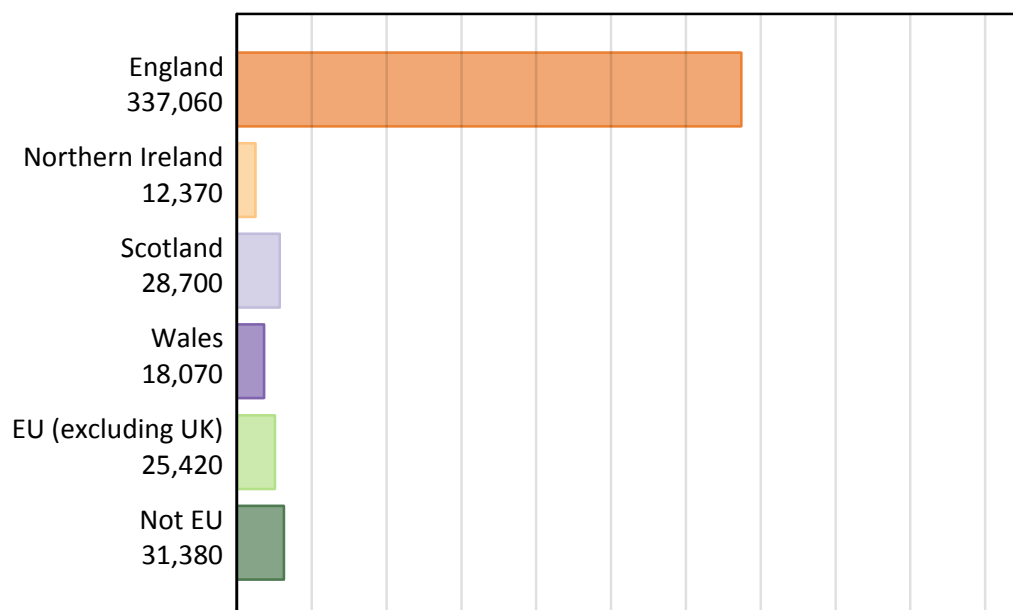


Daily Clearing Analysis: Country

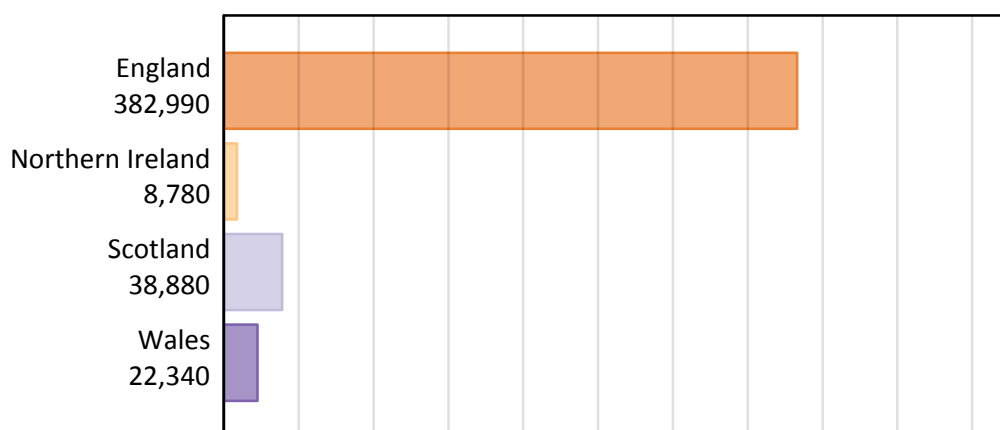
Analysis at 00:05 on Monday 17 August 2015 (4 days after A level results day - No Scot.X1)
BX.1 Placed applicants by country of provider and domicile, 2015 cycle

Domicile of applicant	Country of provider				
	England	Northern Ireland	Scotland	Wales	UK
England	322,270	540	4,370	9,880	337,060
Northern Ireland	3,570	7,690	960	150	12,370
Scotland	1,520	20	27,120	40	28,700
Wales	7,830	10	110	10,120	18,070
EU (excluding UK)	20,040	380	3,890	1,110	25,420
Not EU	27,760	140	2,440	1,040	31,380
All	382,990	8,780	38,880	22,340	452,990

BX.2 Placed applicants by domicile group

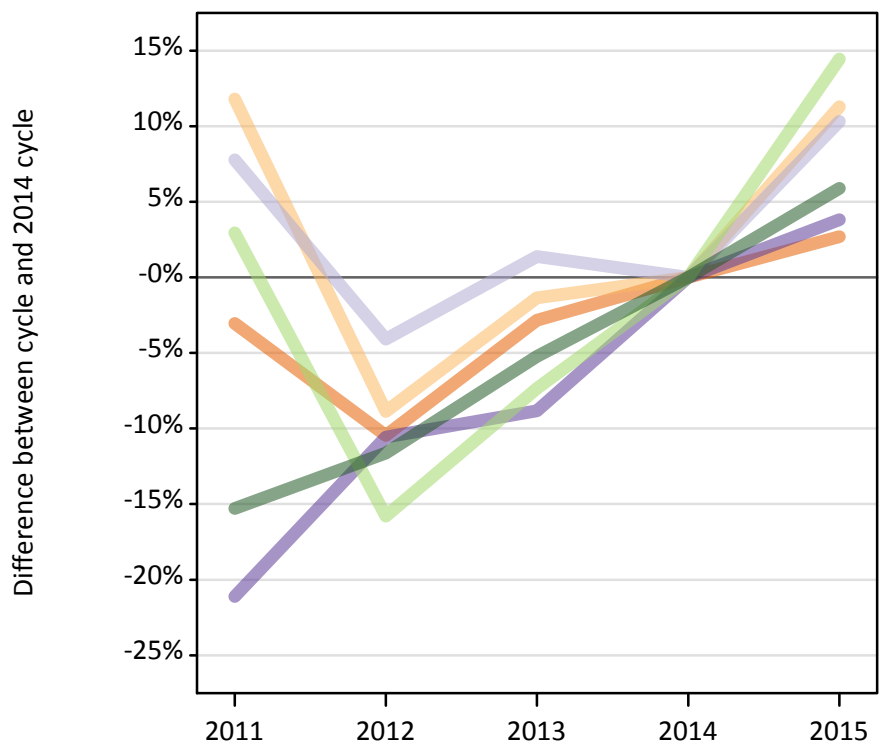


BX.3 Placed applicants by country of provider



BX.4 Placed applicants at 4 days after A level results day: providers in England

Selected applicant domiciles: difference between cycle and 2014 cycle (at 4 days after A level results day)



BX.5 Placed applicants at 4 days after A level results day: providers in England

Placed applicants by domicile (at 4 days after A level results day)

Domicile of applicant	2011	2012	2013	2014	2015
England	304,300	281,020	304,950	313,840	322,270
Northern Ireland	3,580	2,920	3,160	3,200	3,570
Scotland	1,480	1,320	1,390	1,380	1,520
Wales	5,950	6,740	6,880	7,540	7,830
EU (excluding UK)	18,030	14,750	16,230	17,510	20,040
Not EU	22,210	23,170	24,850	26,220	27,760

BX.6 Placed applicants at 4 days after A level results day: providers in England

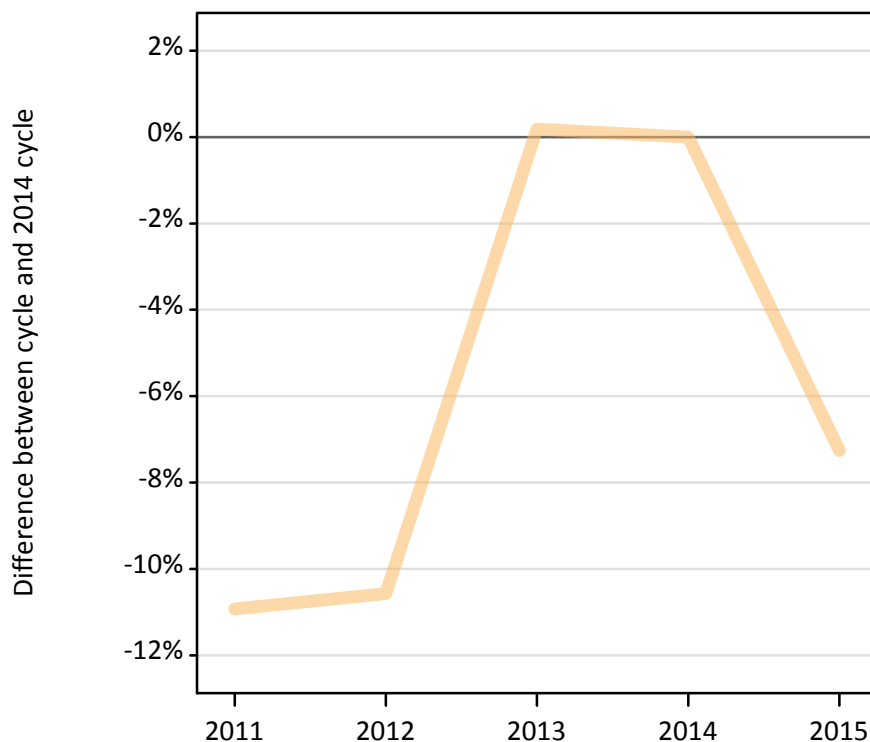
Selected applicant domiciles: difference between cycle and 2014 cycle (at 4 days after A level results day)

Domicile of applicant	2011	2012	2013	2014	2015
England	-3%	-10%	-3%	0%	3%
Northern Ireland	12%	-9%	-1%	0%	11%
Scotland	8%	-4%	1%	0%	10%
Wales	-21%	-11%	-9%	0%	4%
EU (excluding UK)	3%	-16%	-7%	0%	14%
Not EU	-15%	-12%	-5%	0%	6%

BX.7 Placed applicants at 4 days after A level results day: providers in Northern Ireland

Selected applicant domiciles: difference between cycle and 2014 cycle (at 4 days after A level results day)

Northern Ireland

**BX.8 Placed applicants at 4 days after A level results day: providers in Northern Ireland**

Placed applicants by domicile (at 4 days after A level results day)

Domicile of applicant	2011	2012	2013	2014	2015
England	220	220	230	330	540
Northern Ireland	7,390	7,420	8,310	8,290	7,690
Scotland	20	30	10	20	20
Wales	10	0	0	10	10
EU (excluding UK)	420	410	430	460	380
Not EU	110	150	170	170	140

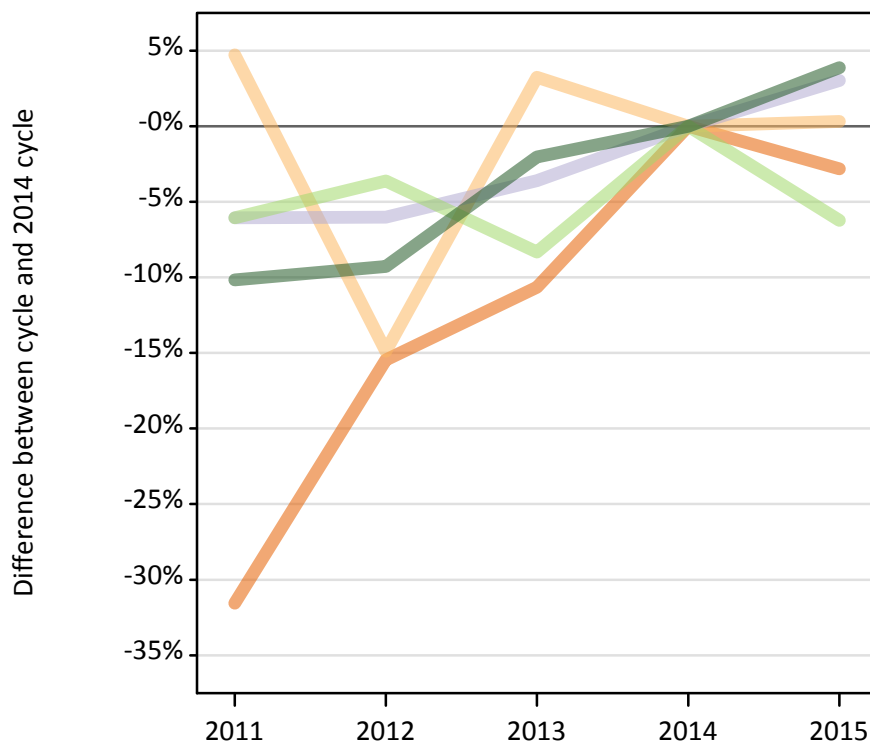
BX.9 Placed applicants at 4 days after A level results day: providers in Northern Ireland

Selected applicant domiciles: difference between cycle and 2014 cycle (at 4 days after A level results day)

Domicile of applicant	2011	2012	2013	2014	2015
Northern Ireland	-11%	-11%	0%	0%	-7%

BX.10 Placed applicants at 4 days after A level results day: providers in Scotland

Selected applicant domiciles: difference between cycle and 2014 cycle (at 4 days after A level results day)



BX.11 Placed applicants at 4 days after A level results day: providers in Scotland

Placed applicants by domicile (at 4 days after A level results day)

Domicile of applicant	2011	2012	2013	2014	2015
England	3,080	3,800	4,020	4,500	4,370
Northern Ireland	1,000	810	990	950	960
Scotland	24,730	24,740	25,380	26,320	27,120
Wales	80	110	100	100	110
EU (excluding UK)	3,900	4,000	3,810	4,150	3,890
Not EU	2,110	2,130	2,300	2,350	2,440

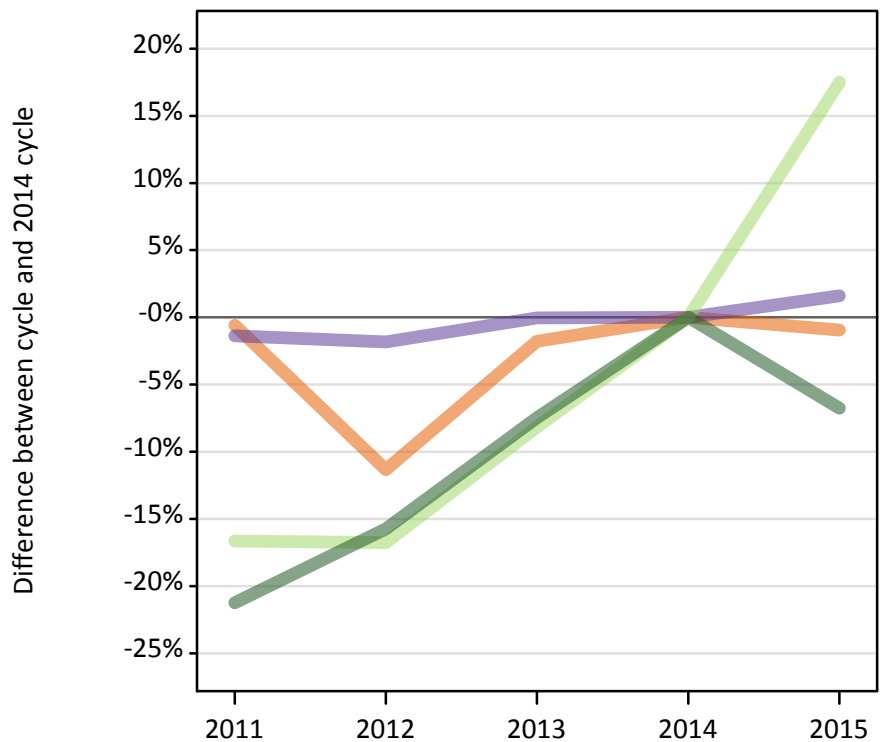
BX.12 Placed applicants at 4 days after A level results day: providers in Scotland

Selected applicant domiciles: difference between cycle and 2014 cycle (at 4 days after A level results day)

Domicile of applicant	2011	2012	2013	2014	2015
England	-32%	-15%	-11%	0%	-3%
Northern Ireland	5%	-15%	3%	0%	0%
Scotland	-6%	-6%	-4%	0%	3%
EU (excluding UK)	-6%	-4%	-8%	0%	-6%
Not EU	-10%	-9%	-2%	0%	4%

BX.13 Placed applicants at 4 days after A level results day: providers in Wales

Selected applicant domiciles: difference between cycle and 2014 cycle (at 4 days after A level results day)



BX.14 Placed applicants at 4 days after A level results day: providers in Wales

Placed applicants by domicile (at 4 days after A level results day)

Domicile of applicant	2011	2012	2013	2014	2015
England	9,920	8,840	9,800	9,970	9,880
Northern Ireland	170	130	150	150	150
Scotland	60	40	60	60	40
Wales	9,820	9,780	9,960	9,960	10,120
EU (excluding UK)	790	790	870	940	1,110
Not EU	880	940	1,030	1,110	1,040

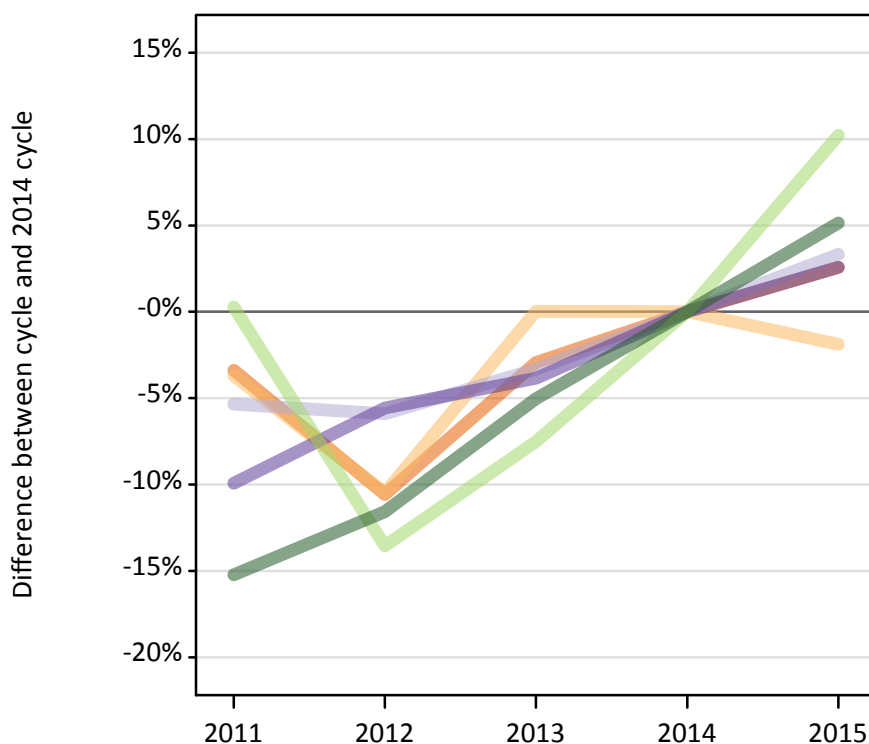
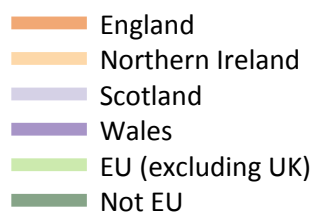
BX.15 Placed applicants at 4 days after A level results day: providers in Wales

Selected applicant domiciles: difference between cycle and 2014 cycle (at 4 days after A level results day)

Domicile of applicant	2011	2012	2013	2014	2015
England	-1%	-11%	-2%	0%	-1%
Wales	-1%	-2%	-0%	0%	2%
EU (excluding UK)	-17%	-17%	-8%	0%	17%
Not EU	-21%	-16%	-7%	0%	-7%

BX.16 Placed applicants at 4 days after A level results day: providers in the UK

Selected applicant domiciles: difference between cycle and 2014 cycle (at 4 days after A level results day)



BX.17 Placed applicants at 4 days after A level results day: providers in the UK

Placed applicants by domicile (at 4 days after A level results day)

Domicile of applicant	2011	2012	2013	2014	2015
England	317,510	293,890	318,990	328,630	337,060
Northern Ireland	12,140	11,280	12,610	12,600	12,370
Scotland	26,280	26,130	26,850	27,770	28,700
Wales	15,860	16,630	16,930	17,610	18,070
EU (excluding UK)	23,130	19,940	21,330	23,070	25,420
Not EU	25,310	26,390	28,350	29,850	31,380

BX.18 Placed applicants at 4 days after A level results day: providers in the UK

Selected applicant domiciles: difference between cycle and 2014 cycle (at 4 days after A level results day)

Domicile of applicant	2011	2012	2013	2014	2015
England	-3%	-11%	-3%	0%	3%
Northern Ireland	-4%	-10%	0%	0%	-2%
Scotland	-5%	-6%	-3%	0%	3%
Wales	-10%	-6%	-4%	0%	3%
EU (excluding UK)	0%	-14%	-8%	0%	10%
Not EU	-15%	-12%	-5%	0%	5%