

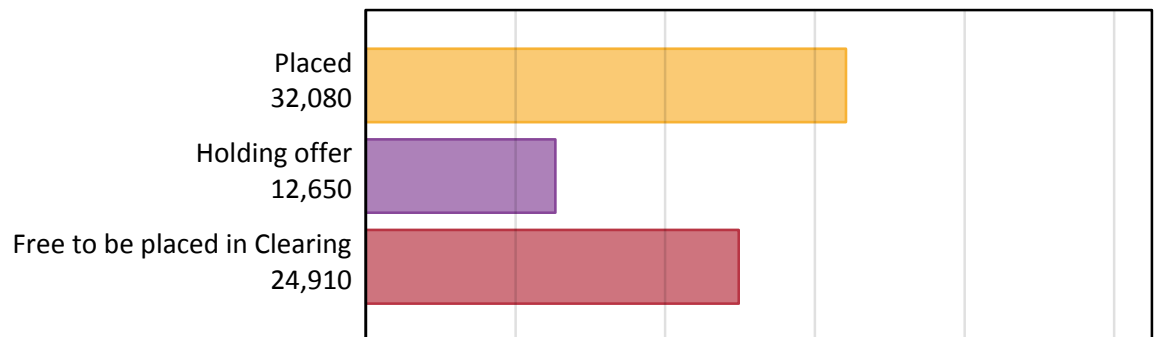
Daily Clearing Analysis: Overview

Analysis at 00:05 on Tuesday 18 August 2015 (5 days after A level results day - No Scot.X1)

AX.1 Applicants by type and status from outside the EU, 2015 cycle

Applicant type	Status	2015
Main scheme	Placed (Clearing)	1,640
	Placed (Adjustment)	60
	Placed (Firm)	25,360
	Placed (Insurance)	3,030
	Placed (Other)	1,700
	Holding offer	12,650
	Free to be placed in Clearing	24,910
Direct to Clearing	Placed (Direct to Clearing)	280
	Other (Direct to Clearing)	800
All applicants	Placed	32,080

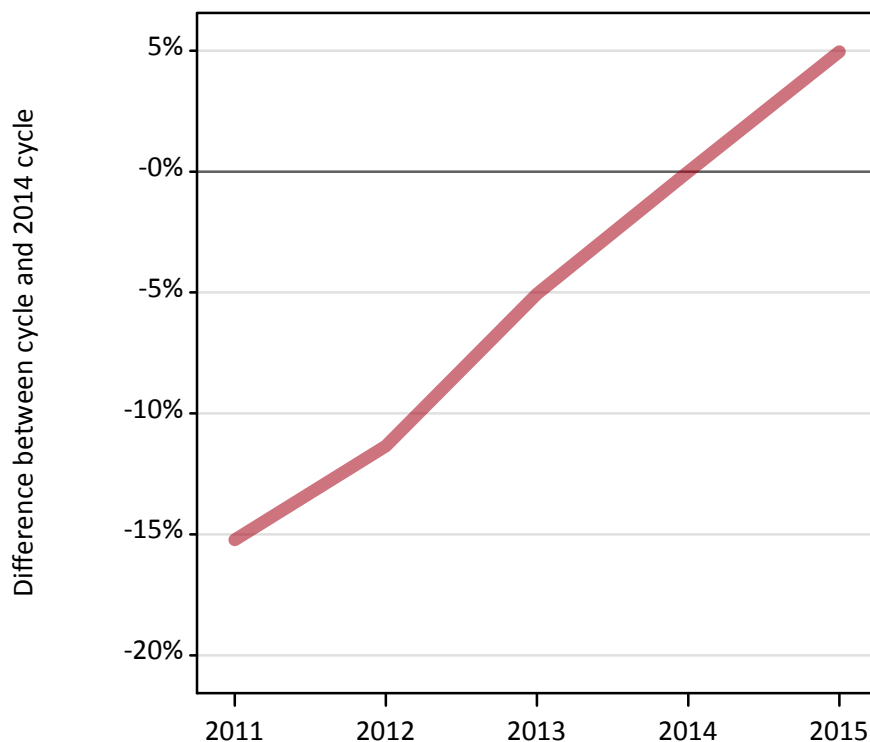
AX.2 Summary of applicants who are placed, holding offers or free to be placed in Clearing (outside the EU)



AX.3 All placed applicants from outside the EU: 5 days after A level results day

All placed applicants: difference between cycle and 2014 cycle

Placed



AX.4 All placed applicants from outside the EU: 5 days after A level results day

All placed applicants: applicants at 5 days after A level results day

Applicant type	Status	2011	2012	2013	2014	2015
All applicants	Placed	25,910	27,090	29,010	30,560	32,080

AX.5 All placed applicants from outside the EU: 5 days after A level results day

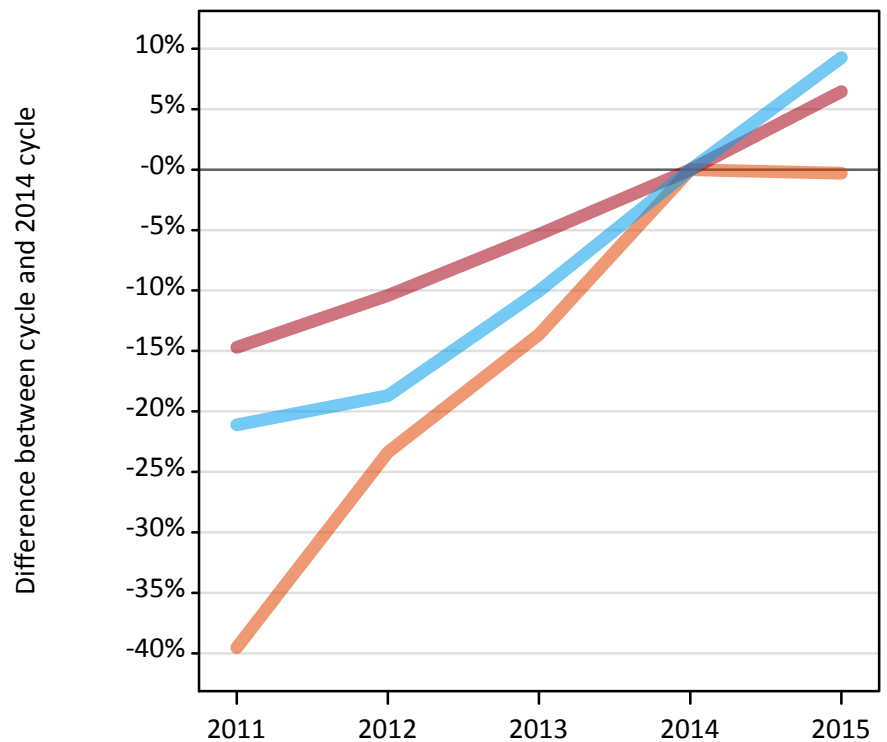
All placed applicants: difference between cycle and 2014 cycle

Applicant type	Status	2011	2012	2013	2014	2015
All applicants	Placed	-15%	-11%	-5%	0%	5%

AX.6 Placed main scheme applicants from outside the EU: 5 days after A level results day

Selected placed routes: difference between cycle and 2014 cycle

- Placed (Clearing)
- Placed (Firm)
- Placed (Insurance)



AX.7 Placed main scheme applicants from outside the EU: 5 days after A level results day

All Main scheme placed routes (excluding Adjustment): applicants at 5 days after A level results day

Applicant type	Status	2011	2012	2013	2014	2015
Main scheme	Placed (Clearing)	990	1,260	1,420	1,640	1,640
	Placed (Firm)	20,320	21,340	22,540	23,820	25,360
	Placed (Insurance)	2,190	2,260	2,500	2,780	3,030
	Placed (Other)	2,210	1,970	2,210	1,990	1,700

AX.8 Placed main scheme applicants from outside the EU: 5 days after A level results day

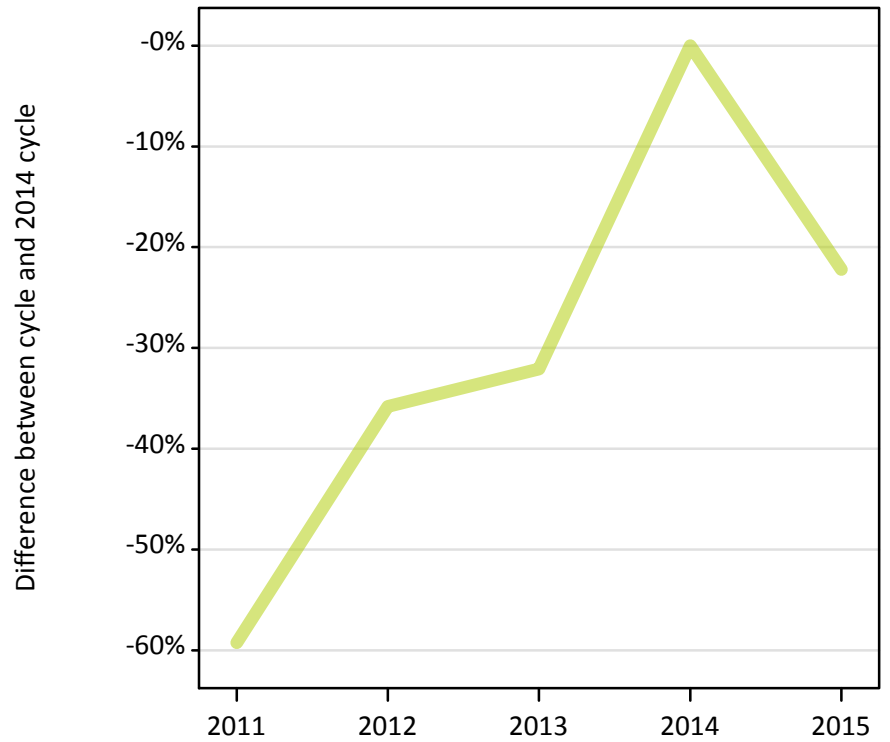
Selected placed routes: difference between cycle and 2014 cycle

Applicant type	Status	2011	2012	2013	2014	2015
Main scheme	Placed (Clearing)	-40%	-23%	-14%	0%	-0%
	Placed (Firm)	-15%	-10%	-5%	0%	6%
	Placed (Insurance)	-21%	-19%	-10%	0%	9%

AX.9 Main scheme applicants placed through adjustment: 5 days after A level results day

Placed through adjustment: difference between cycle and 2014 cycle

Placed (Adjustment)



AX.10 Main scheme applicants placed through adjustment: 5 days after A level results day

Placed through adjustment: applicants at 5 days after A level results day

Applicant type	Status	2011	2012	2013	2014	2015
Main scheme	Placed (Adjustment)	30	50	60	80	60

AX.11 Main scheme applicants placed through adjustment: 5 days after A level results day

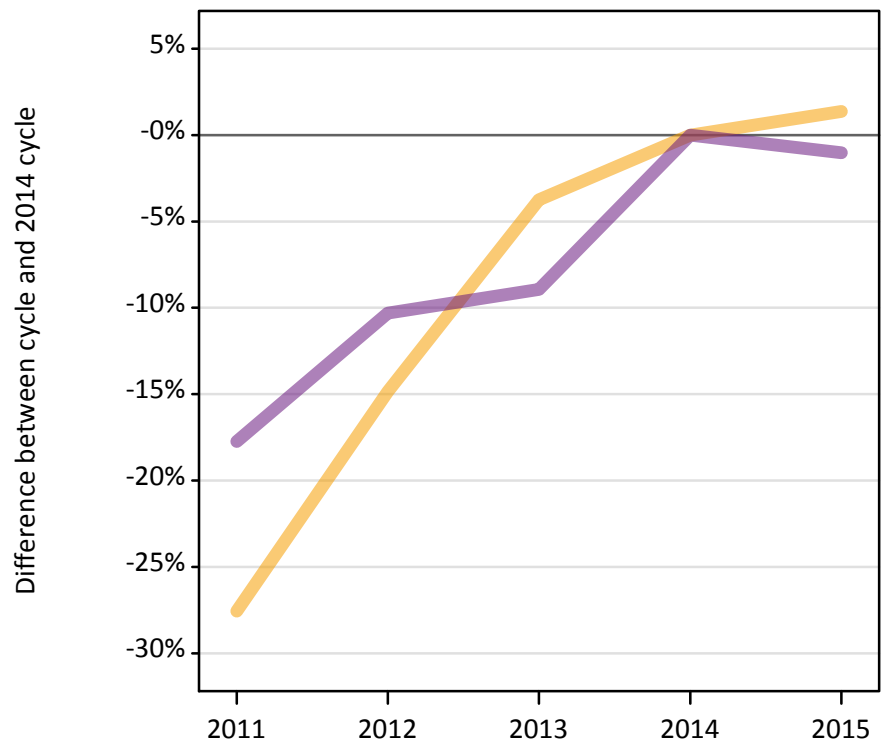
Placed through adjustment: difference between cycle and 2014 cycle

Applicant type	Status	2011	2012	2013	2014	2015
Main scheme	Placed (Adjustment)	-59%	-36%	-32%	0%	-22%

AX.12 Main scheme applicants not currently placed from outside the EU: 5 days after A level results day

Applicants in unplaced states: difference between cycle and 2014 cycle

— Holding offer
— Free to be placed in Clearing



AX.13 Main scheme applicants not currently placed from outside the EU: 5 days after A level results day

Applicants in unplaced states: applicants at 5 days after A level results day

Applicant type	Status	2011	2012	2013	2014	2015
Main scheme	Holding offer	9,040	10,630	12,010	12,480	12,650
	Free to be placed in Clearing	20,710	22,580	22,920	25,170	24,910

AX.14 Main scheme applicants not currently placed from outside the EU: 5 days after A level results day

Applicants in unplaced states: difference between cycle and 2014 cycle

Applicant type	Status	2011	2012	2013	2014	2015
Main scheme	Holding offer	-28%	-15%	-4%	0%	1%
	Free to be placed in Clearing	-18%	-10%	-9%	0%	-1%

AX.15 Direct to Clearing applicants from outside the EU: 5 days after A level results day

Placed (Direct to Clearing): difference between cycle and 2014 cycle

Placed (Direct to Clearing)

**AX.16 Direct to Clearing applicants from outside the EU: 5 days after A level results day**

Direct to Clearing 5 days after A level results day

Applicant type	Status	2011	2012	2013	2014	2015
Direct to Clearing	Placed (Direct to Clearing)	170	220	290	250	280
	Other (Direct to Clearing)	770	780	840	690	800

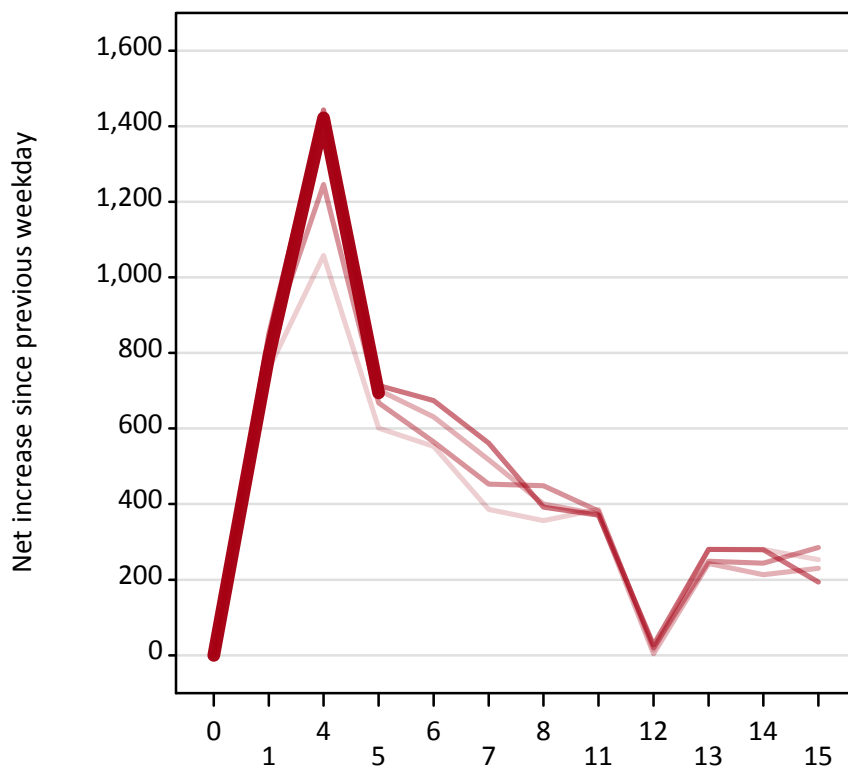
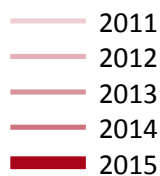
AX.17 Direct to Clearing applicants from outside the EU: 5 days after A level results day

Placed (Direct to Clearing): difference between cycle and 2014 cycle

Applicant type	Status	2011	2012	2013	2014	2015
Direct to Clearing	Placed (Direct to Clearing)	-33%	-13%	17%	0%	14%

AX.18 All Placed: Daily net change (from outside the EU)

Net increase since previous weekday (2015 cycle up to 5 days after A level results day)



AX.19 All Placed: Daily net change (from outside the EU)

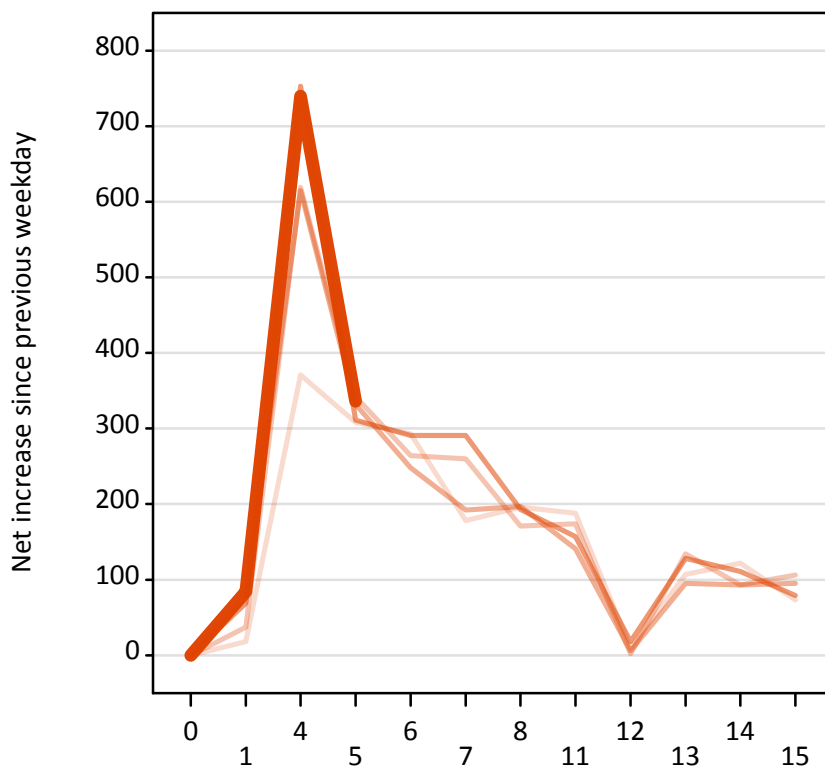
Net increase since previous weekday (2015 cycle up to 5 days after A level results day)

Applicant status, days since A level results day		2011	2012	2013	2014	2015
All Placed	0	0	0	0	0	0
	1	760	790	820	850	790
	4	1,060	1,430	1,250	1,440	1,420
	5	600	700	670	710	690
	6	550	630	570	670	
	7	390	520	450	560	
	8	360	400	450	390	
	11	390	370	380	370	
	12	10	0	20	30	
	13	280	240	250	280	
	14	280	210	240	280	
	15	250	230	290	190	

AX.20 Placed through Clearing only: Daily net change (from outside the EU)

Net increase since previous weekday (2015 cycle up to 5 days after A level results day)

- 2011
- 2012
- 2013
- 2014
- 2015



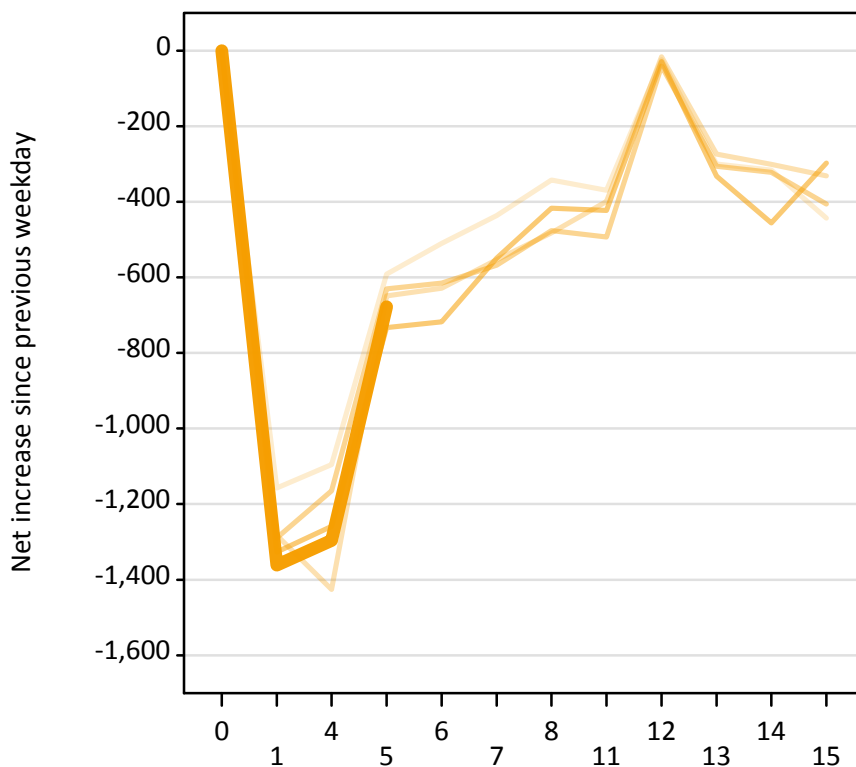
AX.21 Placed through Clearing only: Daily net change (from outside the EU)

Net increase since previous weekday (2015 cycle up to 5 days after A level results day)

Applicant status, days since A level results day		2011	2012	2013	2014	2015
Placed through Clearing only	0	0	0	0	0	0
	1	20	40	80	70	80
	4	370	620	620	750	740
	5	310	340	330	310	340
	6	290	260	250	290	
	7	180	260	190	290	
	8	200	170	200	190	
	11	190	170	140	160	
	12	10	0	10	20	
	13	110	130	100	130	
	14	120	90	90	110	
	15	70	110	100	80	

AX.22 Holding Offer: Daily net change (from outside the EU)

Net increase since previous weekday (2015 cycle up to 5 days after A level results day)



AX.23 Holding Offer: Daily net change (from outside the EU)

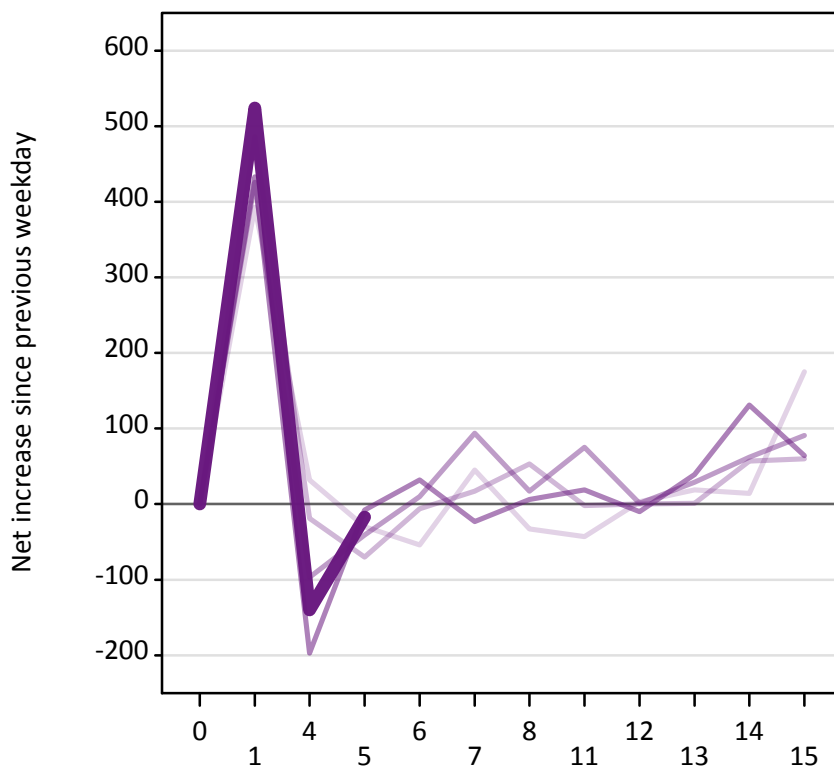
Net increase since previous weekday (2015 cycle up to 5 days after A level results day)

Applicant status, days since A level results day		2011	2012	2013	2014	2015
Holding Offer	0	0	0	0	0	0
	1	-1,160	-1,280	-1,290	-1,330	-1,360
	4	-1,100	-1,430	-1,170	-1,260	-1,300
	5	-590	-650	-630	-730	-680
	6	-510	-630	-620	-720	
	7	-440	-550	-570	-550	
	8	-340	-480	-480	-420	
	11	-370	-400	-490	-420	
	12	-20	-20	-40	-30	
	13	-300	-270	-310	-330	
	14	-320	-300	-320	-460	
	15	-440	-330	-410	-300	

AX.24 Free to be placed in Clearing: Daily net change (from outside the EU)

Net increase since previous weekday (2015 cycle up to 5 days after A level results day)

- 2011
- 2012
- 2013
- 2014
- 2015



AX.25 Free to be placed in Clearing: Daily net change (from outside the EU)

Net increase since previous weekday (2015 cycle up to 5 days after A level results day)

Applicant status, days since A level results day		2011	2012	2013	2014	2015
Free to be placed in Clearing	0	0	0	0	0	0
	1	390	490	430	430	520
	4	30	-20	-100	-200	-140
	5	-30	-70	-40	-10	-20
	6	-50	-10	10	30	
	7	50	20	90	-20	
	8	-30	50	20	10	
	11	-40	0	80	20	
	12	0	0	0	-10	
	13	20	0	30	40	
	14	10	60	60	130	
	15	180	60	90	60	