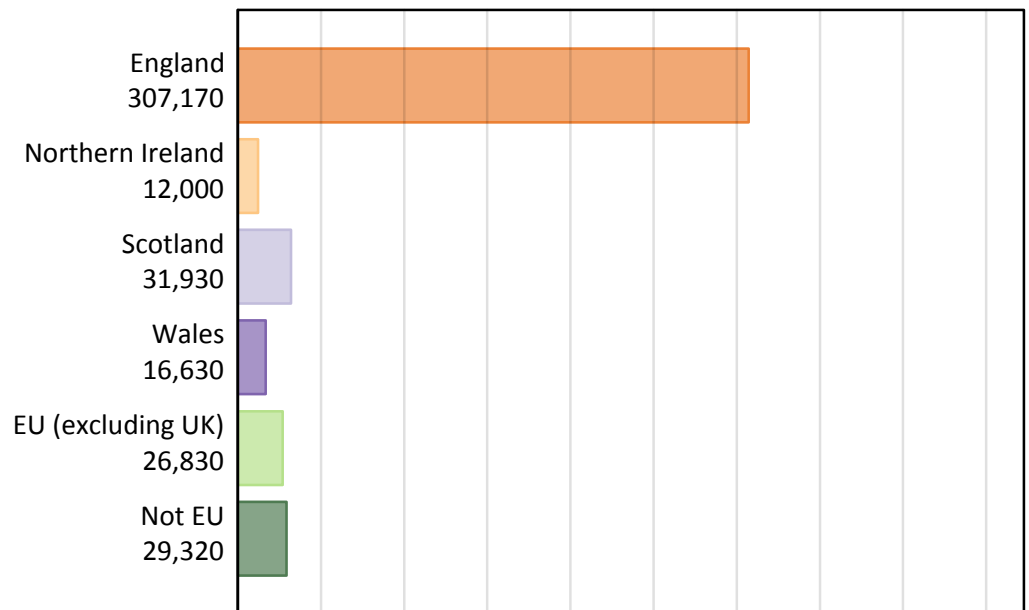


Analysis at 00:05 on Thursday 18 August 2016 (A level results day)

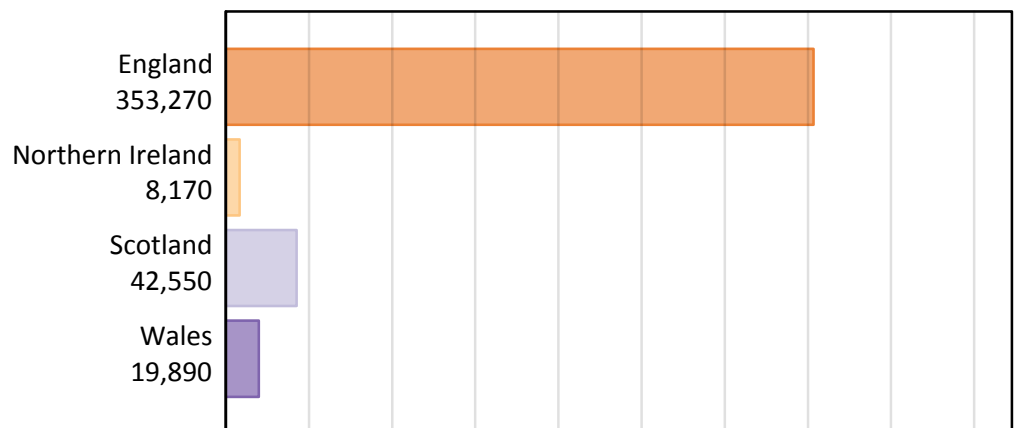
B.1 Placed applicants by country of provider and domicile, 2016 cycle

Domicile of applicant	Country of provider				
	England	Northern Ireland	Scotland	Wales	UK
England	294,210	250	4,250	8,470	307,170
Northern Ireland	3,380	7,450	1,030	150	12,000
Scotland	1,480	10	30,400	40	31,930
Wales	7,330	10	110	9,180	16,630
EU (excluding UK)	21,010	270	4,380	1,170	26,830
Not EU	25,870	190	2,370	890	29,320
All	353,270	8,170	42,550	19,890	423,880

B.2 Placed applicants by domicile group

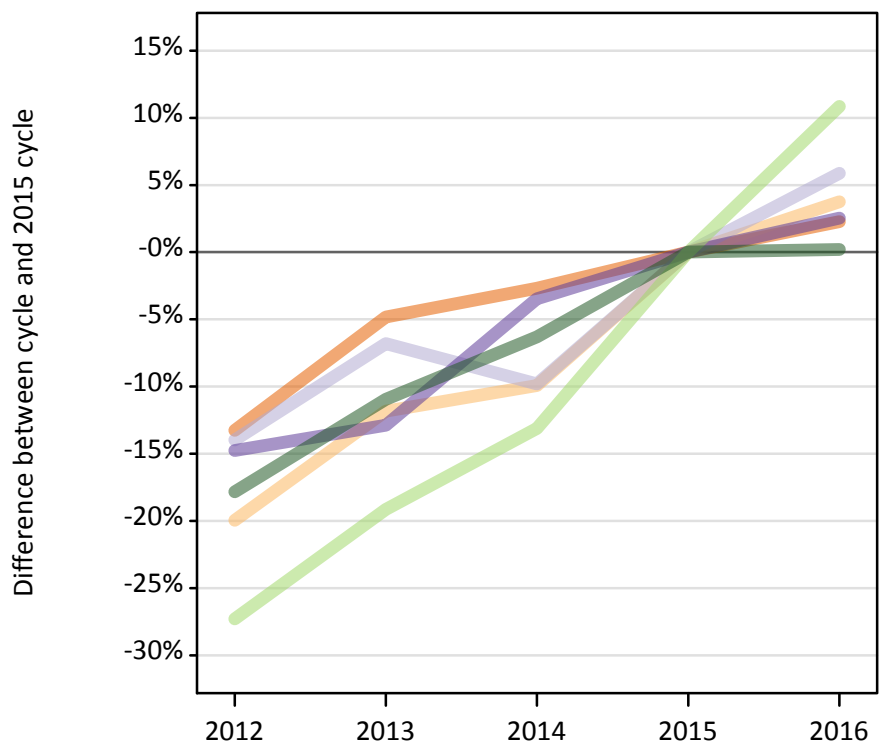
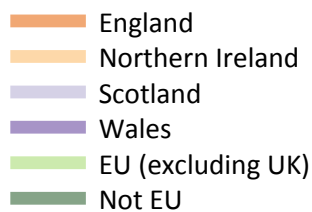


B.3 Placed applicants by country of provider



B.4 Placed applicants at A level results day: providers in England

Selected applicant domiciles: difference between cycle and 2015 cycle (at A level results day)



B.5 Placed applicants at A level results day: providers in England

Placed applicants by domicile (at A level results day)

Domicile of applicant	2012	2013	2014	2015	2016
England	249,570	273,810	279,980	287,690	294,210
Northern Ireland	2,600	2,870	2,930	3,250	3,380
Scotland	1,200	1,300	1,260	1,400	1,480
Wales	6,090	6,230	6,900	7,150	7,330
EU (excluding UK)	13,780	15,330	16,470	18,960	21,010
Not EU	21,220	22,990	24,190	25,820	25,870

B.6 Placed applicants at A level results day: providers in England

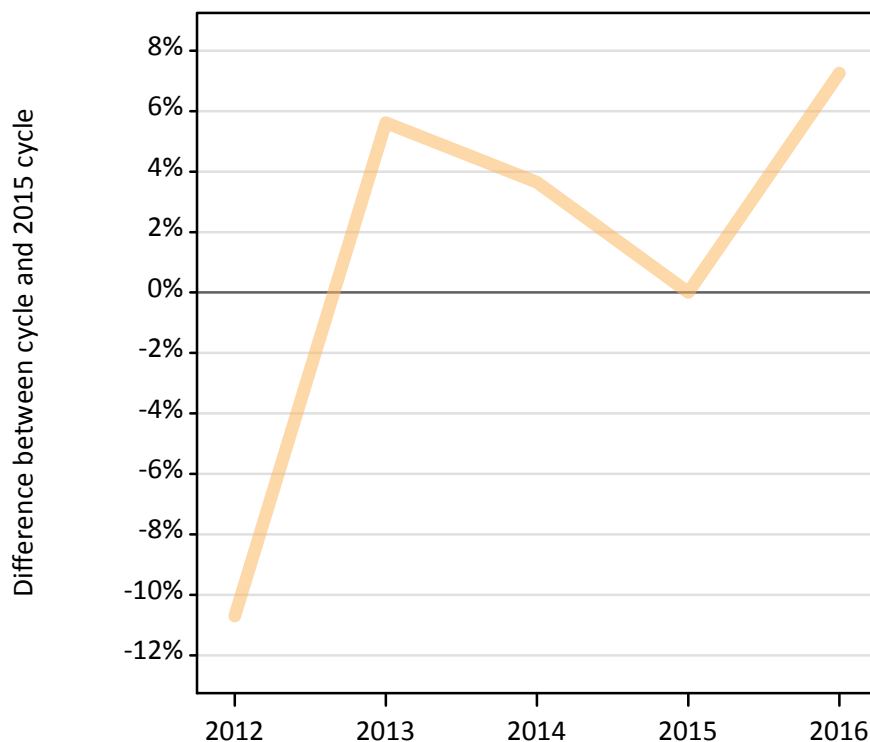
Selected applicant domiciles: difference between cycle and 2015 cycle (at A level results day)

Domicile of applicant	2012	2013	2014	2015	2016
England	-13%	-5%	-3%	0%	2%
Northern Ireland	-20%	-12%	-10%	0%	4%
Scotland	-14%	-7%	-10%	0%	6%
Wales	-15%	-13%	-3%	0%	3%
EU (excluding UK)	-27%	-19%	-13%	0%	11%
Not EU	-18%	-11%	-6%	0%	0%

B.7 Placed applicants at A level results day: providers in Northern Ireland

Selected applicant domiciles: difference between cycle and 2015 cycle (at A level results day)

— Northern Ireland



B.8 Placed applicants at A level results day: providers in Northern Ireland

Placed applicants by domicile (at A level results day)

Domicile of applicant	2012	2013	2014	2015	2016
England	160	190	280	490	250
Northern Ireland	6,200	7,330	7,200	6,940	7,450
Scotland	20	10	20	20	10
Wales	0	0	10	10	10
EU (excluding UK)	340	340	380	320	270
Not EU	140	150	160	130	190

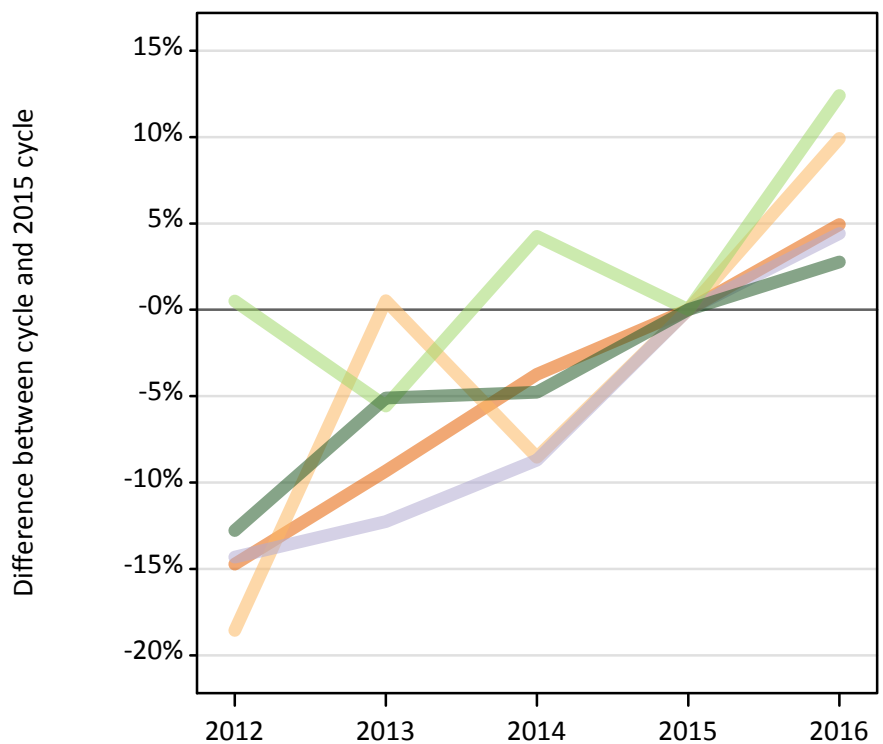
B.9 Placed applicants at A level results day: providers in Northern Ireland

Selected applicant domiciles: difference between cycle and 2015 cycle (at A level results day)

Domicile of applicant	2012	2013	2014	2015	2016
Northern Ireland	-11%	6%	4%	0%	7%

B.10 Placed applicants at A level results day: providers in Scotland

Selected applicant domiciles: difference between cycle and 2015 cycle (at A level results day)



B.11 Placed applicants at A level results day: providers in Scotland

Placed applicants by domicile (at A level results day)

Domicile of applicant	2012	2013	2014	2015	2016
England	3,450	3,670	3,900	4,050	4,250
Northern Ireland	760	940	860	940	1,030
Scotland	24,950	25,550	26,590	29,120	30,400
Wales	90	90	90	90	110
EU (excluding UK)	3,920	3,680	4,070	3,900	4,380
Not EU	2,010	2,190	2,200	2,310	2,370

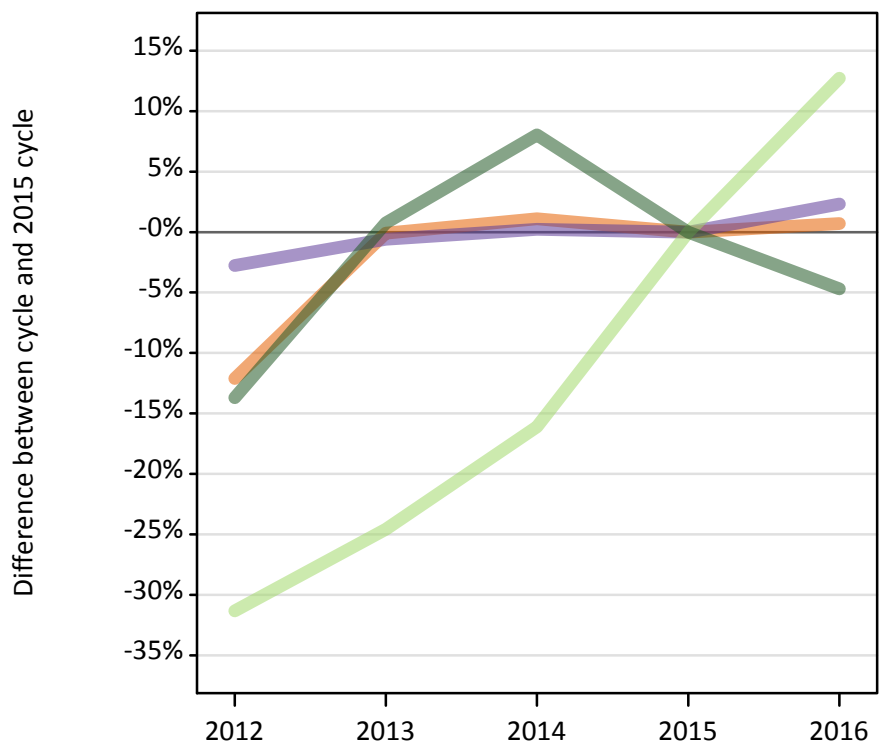
B.12 Placed applicants at A level results day: providers in Scotland

Selected applicant domiciles: difference between cycle and 2015 cycle (at A level results day)

Domicile of applicant	2012	2013	2014	2015	2016
England	-15%	-9%	-4%	0%	5%
Northern Ireland	-19%	1%	-9%	0%	10%
Scotland	-14%	-12%	-9%	0%	4%
EU (excluding UK)	1%	-6%	4%	0%	12%
Not EU	-13%	-5%	-5%	0%	3%

B.13 Placed applicants at A level results day: providers in Wales

Selected applicant domiciles: difference between cycle and 2015 cycle (at A level results day)



B.14 Placed applicants at A level results day: providers in Wales

Placed applicants by domicile (at A level results day)

Domicile of applicant	2012	2013	2014	2015	2016
England	7,390	8,400	8,500	8,410	8,470
Northern Ireland	120	140	130	130	150
Scotland	40	50	50	40	40
Wales	8,720	8,920	8,990	8,970	9,180
EU (excluding UK)	710	780	870	1,040	1,170
Not EU	810	940	1,010	930	890

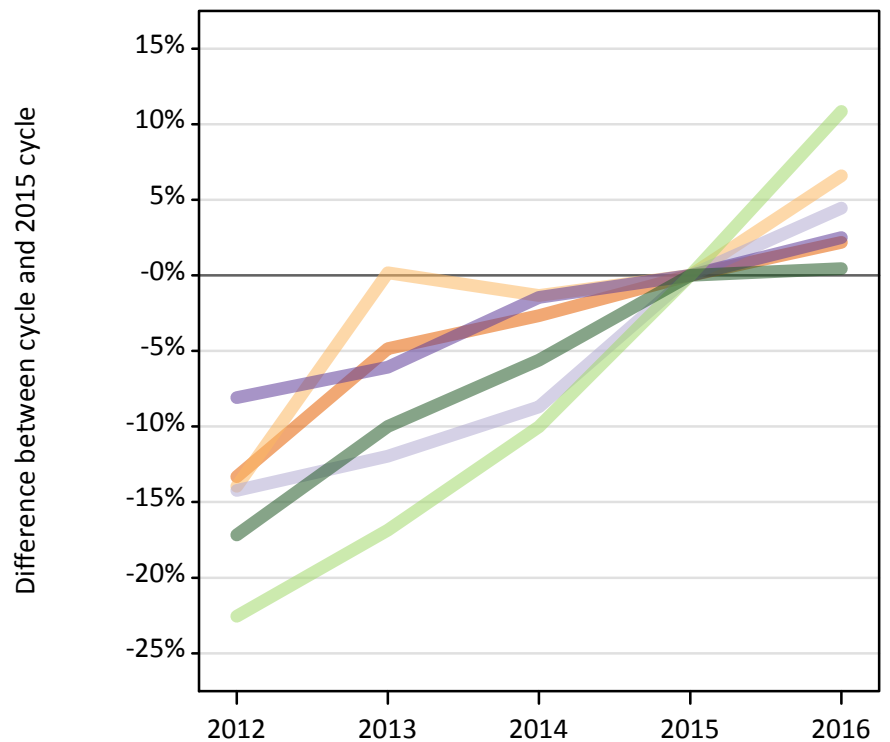
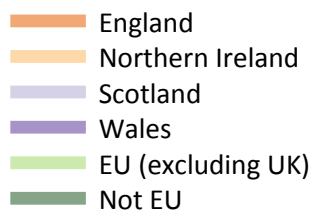
B.15 Placed applicants at A level results day: providers in Wales

Selected applicant domiciles: difference between cycle and 2015 cycle (at A level results day)

Domicile of applicant	2012	2013	2014	2015	2016
England	-12%	-0%	1%	0%	1%
Wales	-3%	-1%	0%	0%	2%
EU (excluding UK)	-31%	-25%	-16%	0%	13%
Not EU	-14%	1%	8%	0%	-5%

B.16 Placed applicants at A level results day: providers in the UK

Selected applicant domiciles: difference between cycle and 2015 cycle (at A level results day)



B.17 Placed applicants at A level results day: providers in the UK

Placed applicants by domicile (at A level results day)

Domicile of applicant	2012	2013	2014	2015	2016
England	260,570	286,070	292,650	300,630	307,170
Northern Ireland	9,690	11,280	11,110	11,260	12,000
Scotland	26,220	26,910	27,910	30,570	31,930
Wales	14,910	15,240	15,980	16,220	16,630
EU (excluding UK)	18,750	20,130	21,790	24,210	26,830
Not EU	24,180	26,280	27,560	29,190	29,320

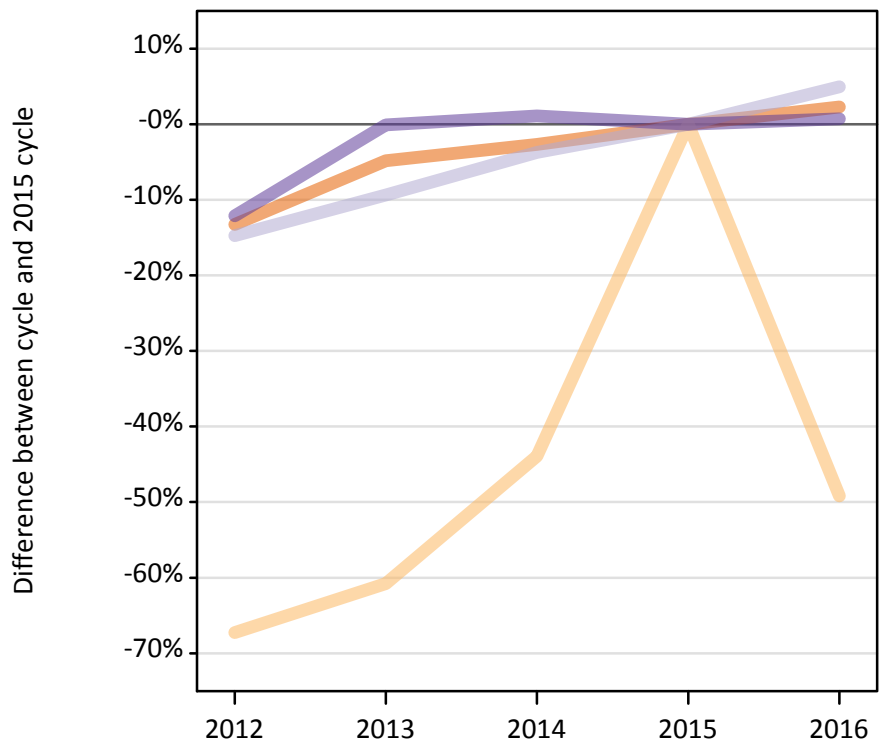
B.18 Placed applicants at A level results day: providers in the UK

Selected applicant domiciles: difference between cycle and 2015 cycle (at A level results day)

Domicile of applicant	2012	2013	2014	2015	2016
England	-13%	-5%	-3%	0%	2%
Northern Ireland	-14%	0%	-1%	0%	7%
Scotland	-14%	-12%	-9%	0%	4%
Wales	-8%	-6%	-1%	0%	3%
EU (excluding UK)	-23%	-17%	-10%	0%	11%
Not EU	-17%	-10%	-6%	0%	0%

B.19 Placed applicants at A level results day: domiciled in England

Selected provider countries: difference between cycle and 2015 cycle (at A level results day)



B.20 Placed applicants at A level results day: domiciled in England

Placed applicants by provider country (at A level results day)

Country of provider	2012	2013	2014	2015	2016
England	249,570	273,810	279,980	287,690	294,210
Northern Ireland	160	190	280	490	250
Scotland	3,450	3,670	3,900	4,050	4,250
Wales	7,390	8,400	8,500	8,410	8,470

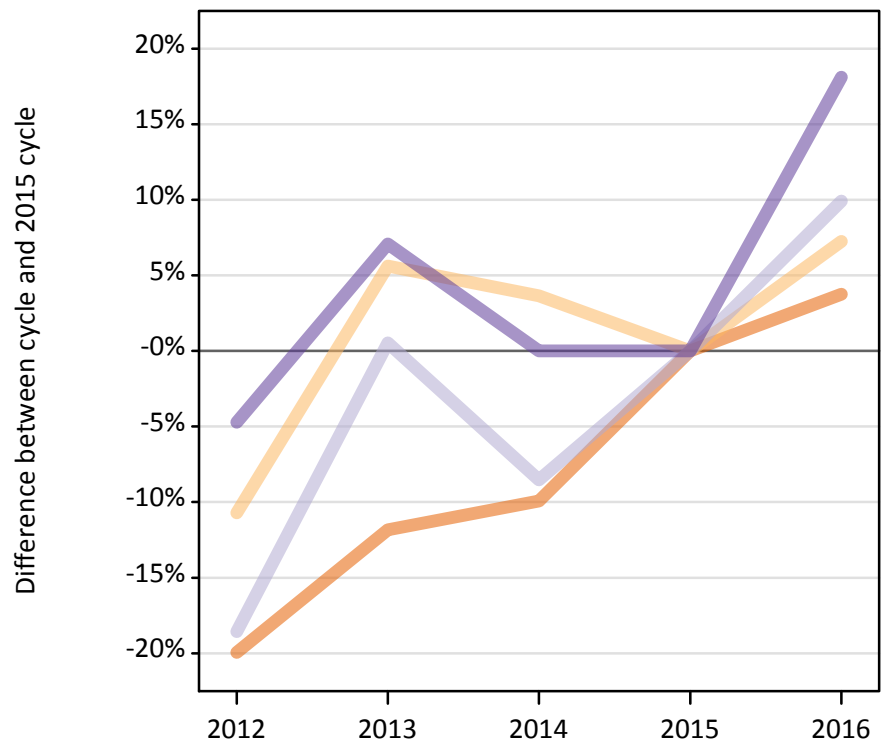
B.21 Placed applicants at A level results day: domiciled in England

Selected provider countries: difference between cycle and 2015 cycle (at A level results day)

Country of provider	2012	2013	2014	2015	2016
England	-13%	-5%	-3%	0%	2%
Northern Ireland	-67%	-61%	-44%	0%	-49%
Scotland	-15%	-9%	-4%	0%	5%
Wales	-12%	-0%	1%	0%	1%

B.22 Placed applicants at A level results day: domiciled in Northern Ireland

Selected provider countries: difference between cycle and 2015 cycle (at A level results day)



B.23 Placed applicants at A level results day: domiciled in Northern Ireland

Placed applicants by provider country (at A level results day)

Country of provider	2012	2013	2014	2015	2016
England	2,600	2,870	2,930	3,250	3,380
Northern Ireland	6,200	7,330	7,200	6,940	7,450
Scotland	760	940	860	940	1,030
Wales	120	140	130	130	150

B.24 Placed applicants at A level results day: domiciled in Northern Ireland

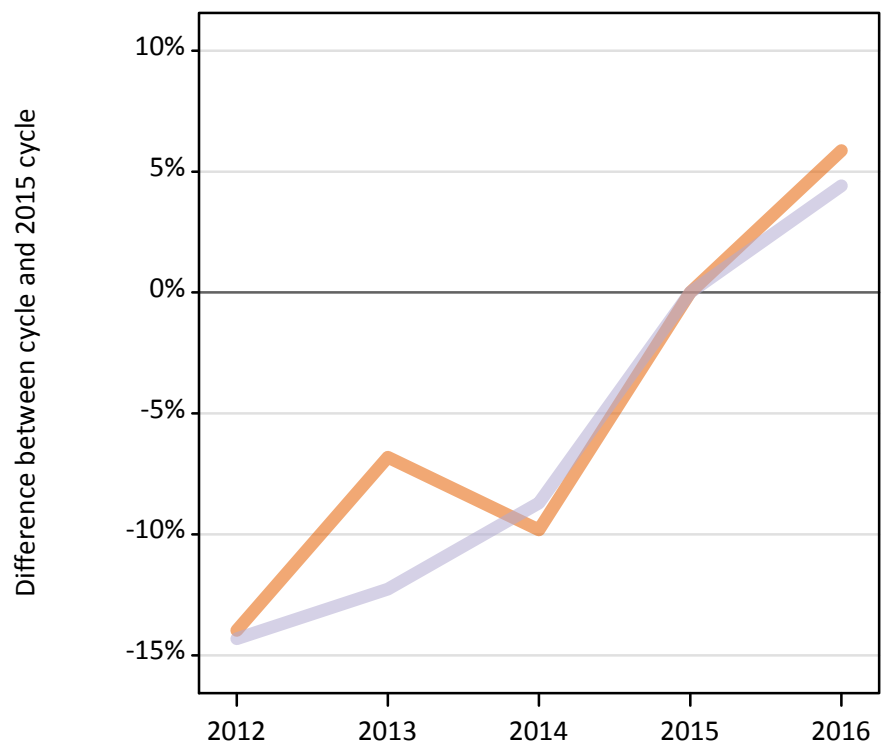
Selected provider countries: difference between cycle and 2015 cycle (at A level results day)

Country of provider	2012	2013	2014	2015	2016
England	-20%	-12%	-10%	0%	4%
Northern Ireland	-11%	6%	4%	0%	7%
Scotland	-19%	1%	-9%	0%	10%
Wales	-5%	7%	0%	0%	18%

B.25 Placed applicants at A level results day: domiciled in Scotland

Selected provider countries: difference between cycle and 2015 cycle (at A level results day)

England
Scotland



B.26 Placed applicants at A level results day: domiciled in Scotland

Placed applicants by provider country (at A level results day)

Country of provider	2012	2013	2014	2015	2016
England	1,200	1,300	1,260	1,400	1,480
Northern Ireland	20	10	20	20	10
Scotland	24,950	25,550	26,590	29,120	30,400
Wales	40	50	50	40	40

B.27 Placed applicants at A level results day: domiciled in Scotland

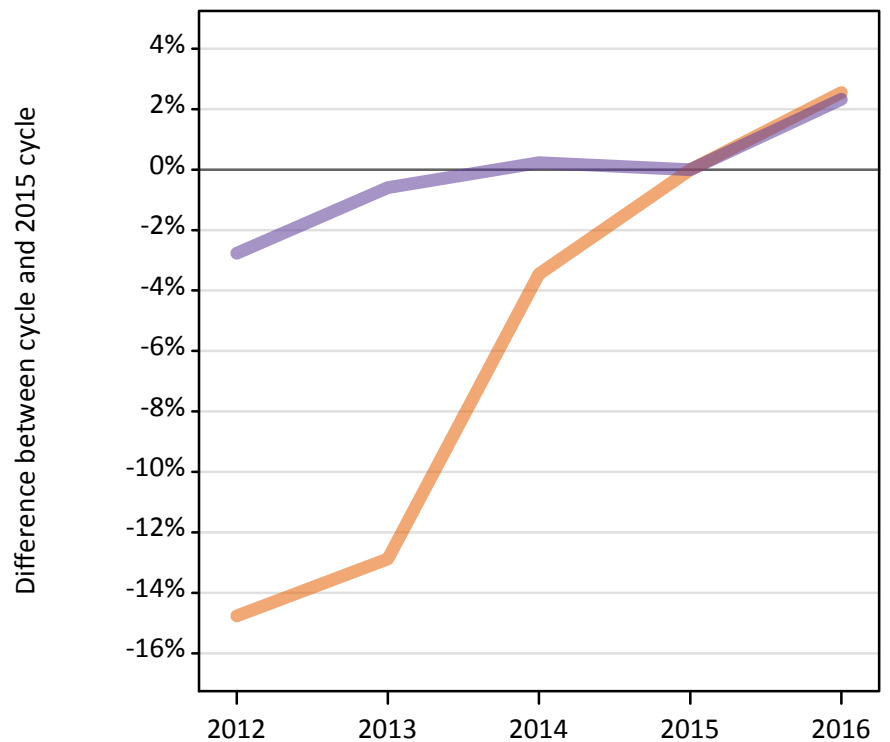
Selected provider countries: difference between cycle and 2015 cycle (at A level results day)

Country of provider	2012	2013	2014	2015	2016
England	-14%	-7%	-10%	0%	6%
Scotland	-14%	-12%	-9%	0%	4%

B.28 Placed applicants at A level results day: domiciled in Wales

Selected provider countries: difference between cycle and 2015 cycle (at A level results day)

England
Wales



B.29 Placed applicants at A level results day: domiciled in Wales

Placed applicants by provider country (at A level results day)

Country of provider	2012	2013	2014	2015	2016
England	6,090	6,230	6,900	7,150	7,330
Northern Ireland	0	0	10	10	10
Scotland	90	90	90	90	110
Wales	8,720	8,920	8,990	8,970	9,180

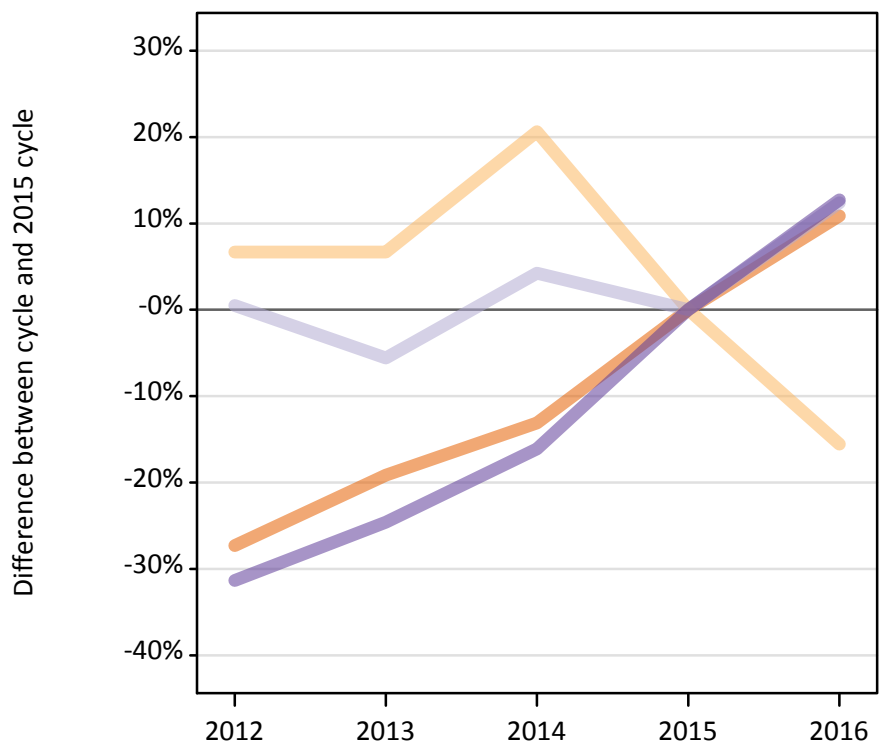
B.30 Placed applicants at A level results day: domiciled in Wales

Selected provider countries: difference between cycle and 2015 cycle (at A level results day)

Country of provider	2012	2013	2014	2015	2016
England	-15%	-13%	-3%	0%	3%
Wales	-3%	-1%	0%	0%	2%

B.31 Placed applicants at A level results day: domiciled in EU (excluding UK)

Selected provider countries: difference between cycle and 2015 cycle (at A level results day)



B.32 Placed applicants at A level results day: domiciled in EU (excluding UK)

Placed applicants by provider country (at A level results day)

Country of provider	2012	2013	2014	2015	2016
England	13,780	15,330	16,470	18,960	21,010
Northern Ireland	340	340	380	320	270
Scotland	3,920	3,680	4,070	3,900	4,380
Wales	710	780	870	1,040	1,170

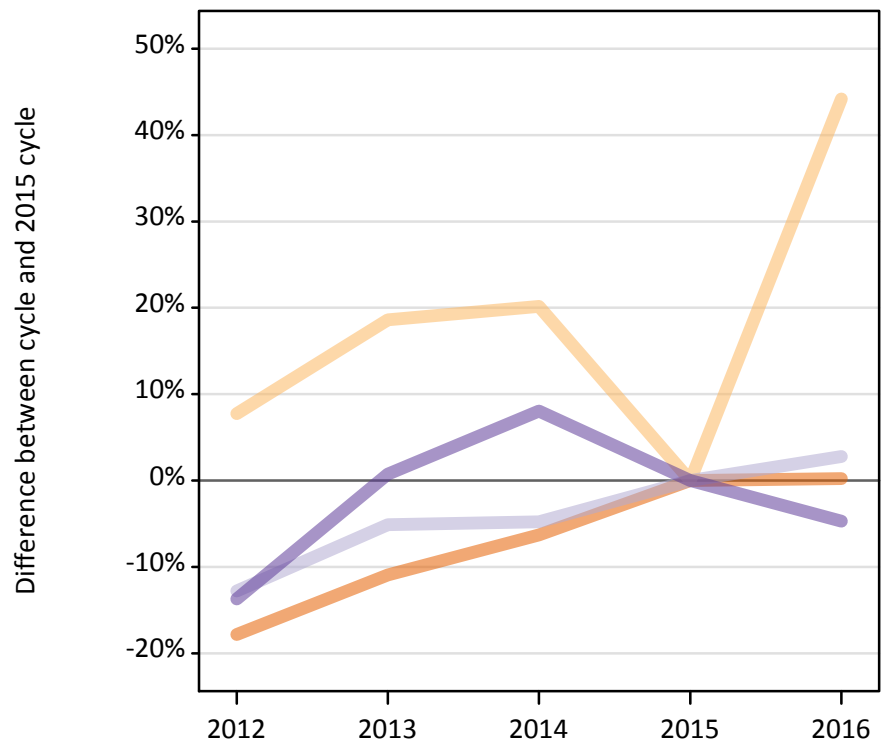
B.33 Placed applicants at A level results day: domiciled in EU (excluding UK)

Selected provider countries: difference between cycle and 2015 cycle (at A level results day)

Country of provider	2012	2013	2014	2015	2016
England	-27%	-19%	-13%	0%	11%
Northern Ireland	7%	7%	21%	0%	-16%
Scotland	1%	-6%	4%	0%	12%
Wales	-31%	-25%	-16%	0%	13%

B.34 Placed applicants at A level results day: domiciled in Not EU

Selected provider countries: difference between cycle and 2015 cycle (at A level results day)



B.35 Placed applicants at A level results day: domiciled in Not EU

Placed applicants by provider country (at A level results day)

Country of provider	2012	2013	2014	2015	2016
England	21,220	22,990	24,190	25,820	25,870
Northern Ireland	140	150	160	130	190
Scotland	2,010	2,190	2,200	2,310	2,370
Wales	810	940	1,010	930	890

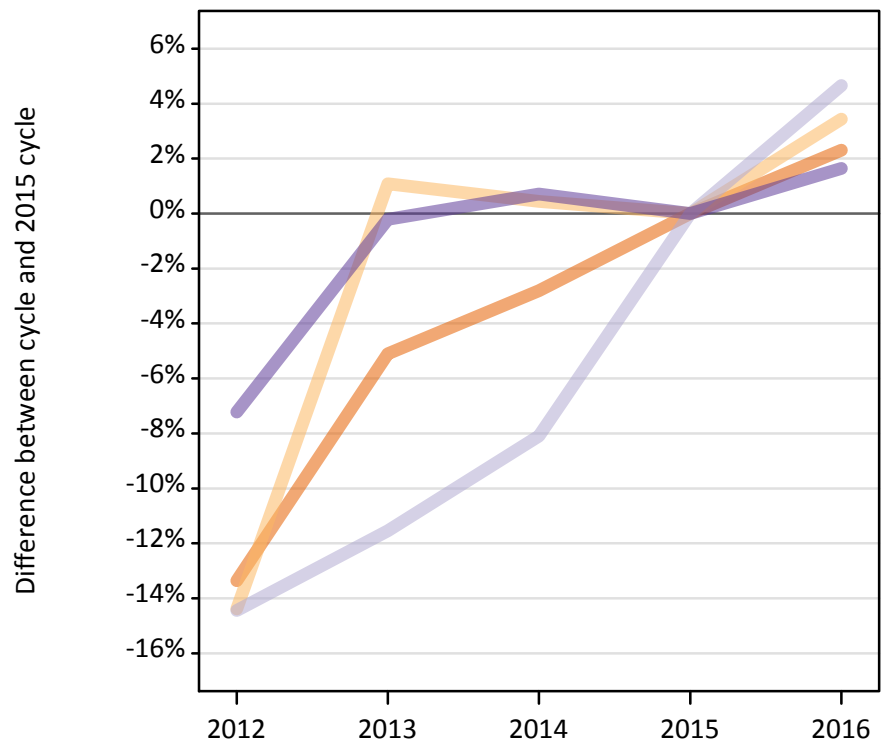
B.36 Placed applicants at A level results day: domiciled in Not EU

Selected provider countries: difference between cycle and 2015 cycle (at A level results day)

Country of provider	2012	2013	2014	2015	2016
England	-18%	-11%	-6%	0%	0%
Northern Ireland	8%	19%	20%	0%	44%
Scotland	-13%	-5%	-5%	0%	3%
Wales	-14%	1%	8%	0%	-5%

B.37 Placed applicants at A level results day: domiciled in UK

Selected provider countries: difference between cycle and 2015 cycle (at A level results day)



B.38 Placed applicants at A level results day: domiciled in UK

Placed applicants by provider country (at A level results day)

Country of provider	2012	2013	2014	2015	2016
England	259,470	284,210	291,070	299,480	306,390
Northern Ireland	6,390	7,540	7,490	7,460	7,720
Scotland	29,260	30,250	31,430	34,200	35,790
Wales	16,280	17,510	17,670	17,540	17,830

B.39 Placed applicants at A level results day: domiciled in UK

Selected provider countries: difference between cycle and 2015 cycle (at A level results day)

Country of provider	2012	2013	2014	2015	2016
England	-13%	-5%	-3%	0%	2%
Northern Ireland	-14%	1%	0%	0%	3%
Scotland	-14%	-12%	-8%	0%	5%
Wales	-7%	-0%	1%	0%	2%