

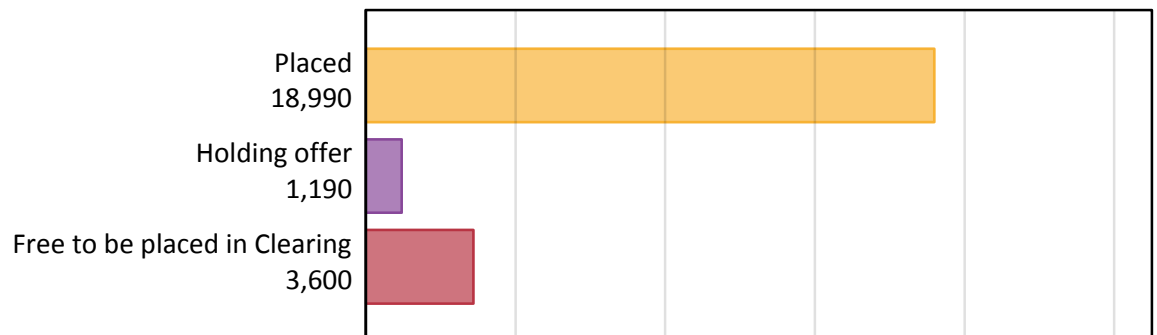
Daily Clearing Analysis: Overview

Analysis at 00:05 on Friday 26 August 2016 (8 days after A level results day)

A.1 Applicants by type and status from Wales, 2016 cycle

Applicant type	Status	2016
Main scheme	Placed (Clearing)	1,210
	Placed (Adjustment)	20
	Placed (Firm)	15,820
	Placed (Insurance)	1,100
	Placed (Other)	540
	Holding offer	1,190
	Free to be placed in Clearing	3,600
Direct to Clearing	Placed (Direct to Clearing)	300
	Other (Direct to Clearing)	240
All applicants	Placed	18,990

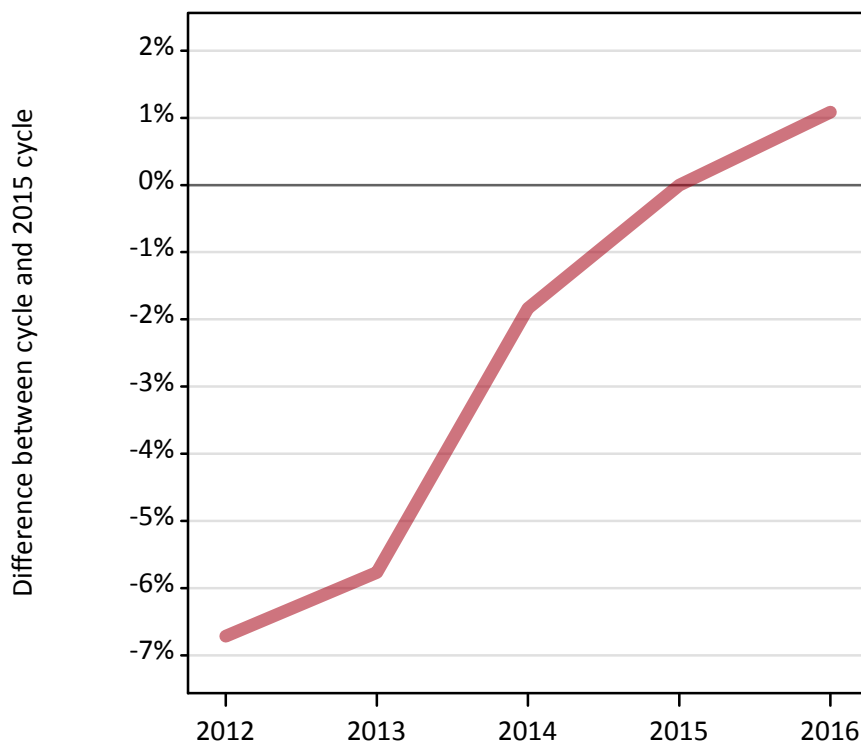
A.2 Summary of applicants who are placed, holding offers or free to be placed in Clearing (Wales)



A.3 All placed applicants from Wales: 8 days after A level results day

All placed applicants: difference between cycle and 2015 cycle

Placed



A.4 All placed applicants from Wales: 8 days after A level results day

All placed applicants: applicants at 8 days after A level results day

Applicant type	Status	2012	2013	2014	2015	2016
All applicants	Placed	17,520	17,700	18,440	18,780	18,990

A.5 All placed applicants from Wales: 8 days after A level results day

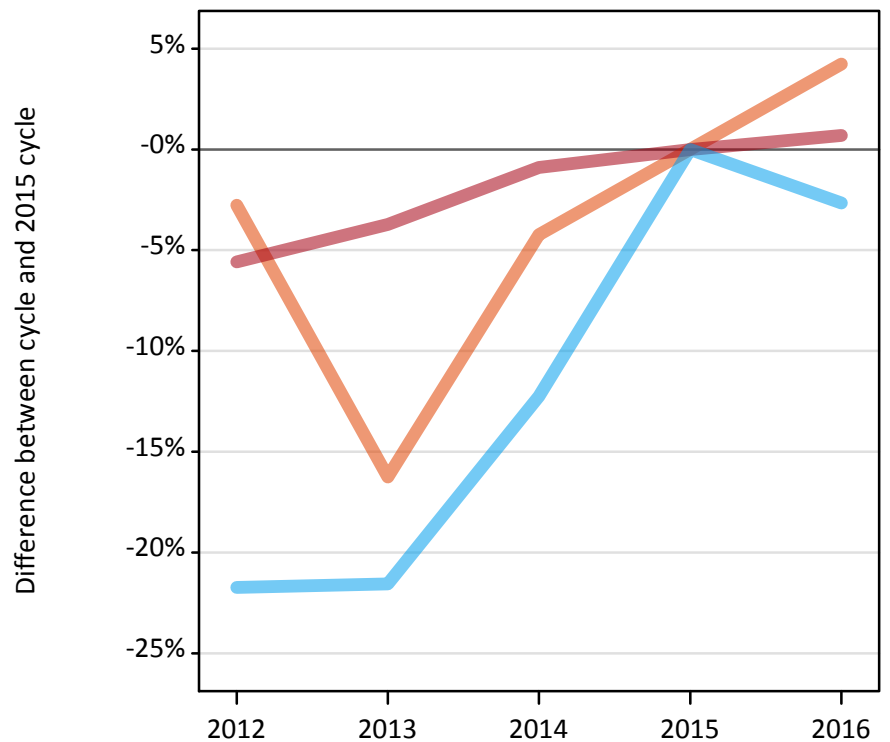
All placed applicants: difference between cycle and 2015 cycle

Applicant type	Status	2012	2013	2014	2015	2016
All applicants	Placed	-7%	-6%	-2%	0%	1%

A.6 Placed main scheme applicants from Wales: 8 days after A level results day

Selected placed routes: difference between cycle and 2015 cycle

- Placed (Clearing)
- Placed (Firm)
- Placed (Insurance)



A.7 Placed main scheme applicants from Wales: 8 days after A level results day

All Main scheme placed routes (excluding Adjustment): applicants at 8 days after A level results day

Applicant type	Status	2012	2013	2014	2015	2016
Main scheme	Placed (Clearing)	1,130	970	1,110	1,160	1,210
	Placed (Firm)	14,840	15,130	15,580	15,720	15,820
	Placed (Insurance)	880	880	990	1,130	1,100
	Placed (Other)	360	410	470	480	540

A.8 Placed main scheme applicants from Wales: 8 days after A level results day

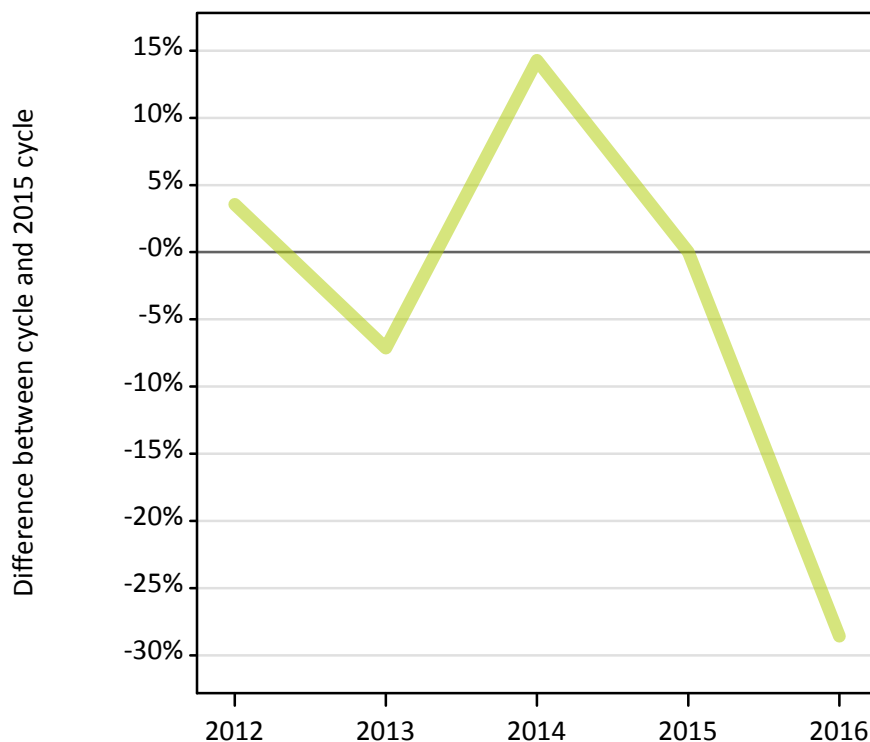
Selected placed routes: difference between cycle and 2015 cycle

Applicant type	Status	2012	2013	2014	2015	2016
Main scheme	Placed (Clearing)	-3%	-16%	-4%	0%	4%
	Placed (Firm)	-6%	-4%	-1%	0%	1%
	Placed (Insurance)	-22%	-22%	-12%	0%	-3%

A.9 Main scheme applicants placed through adjustment: 8 days after A level results day

Placed through adjustment: difference between cycle and 2015 cycle

Placed (Adjustment)



A.10 Main scheme applicants placed through adjustment: 8 days after A level results day

Placed through adjustment: applicants at 8 days after A level results day

Applicant type	Status	2012	2013	2014	2015	2016
Main scheme	Placed (Adjustment)	30	30	30	30	20

A.11 Main scheme applicants placed through adjustment: 8 days after A level results day

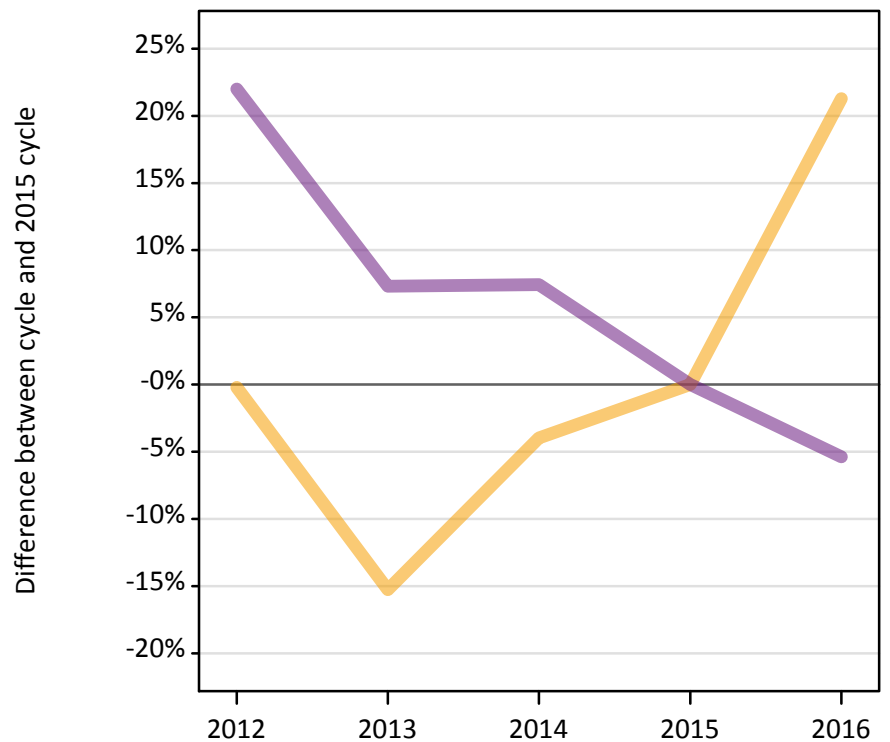
Placed through adjustment: difference between cycle and 2015 cycle

Applicant type	Status	2012	2013	2014	2015	2016
Main scheme	Placed (Adjustment)	4%	-7%	14%	0%	-29%

A.12 Main scheme applicants not currently placed from Wales: 8 days after A level results day

Applicants in unplaced states: difference between cycle and 2015 cycle

— Holding offer
— Free to be placed in Clearing



A.13 Main scheme applicants not currently placed from Wales: 8 days after A level results day

Applicants in unplaced states: applicants at 8 days after A level results day

Applicant type	Status	2012	2013	2014	2015	2016
Main scheme	Holding offer	980	830	940	980	1,190
	Free to be placed in Clearing	4,640	4,080	4,080	3,800	3,600

A.14 Main scheme applicants not currently placed from Wales: 8 days after A level results day

Applicants in unplaced states: difference between cycle and 2015 cycle

Applicant type	Status	2012	2013	2014	2015	2016
Main scheme	Holding offer	-0%	-15%	-4%	0%	21%
	Free to be placed in Clearing	22%	7%	7%	0%	-5%

A.15 Direct to Clearing applicants from Wales: 8 days after A level results day

Placed (Direct to Clearing): difference between cycle and 2015 cycle

Placed (Direct to Clearing)



A.16 Direct to Clearing applicants from Wales: 8 days after A level results day

Direct to Clearing 8 days after A level results day

Applicant type	Status	2012	2013	2014	2015	2016
Direct to Clearing	Placed (Direct to Clearing)	280	280	260	280	300
	Other (Direct to Clearing)	220	230	270	290	240

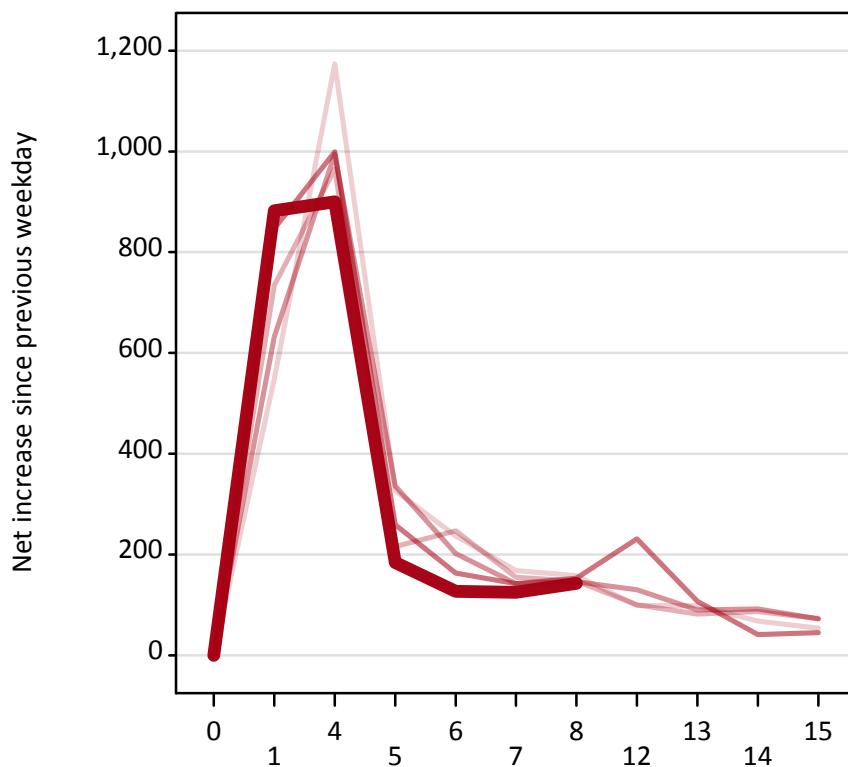
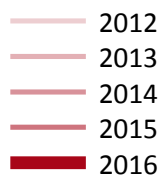
A.17 Direct to Clearing applicants from Wales: 8 days after A level results day

Placed (Direct to Clearing): difference between cycle and 2015 cycle

Applicant type	Status	2012	2013	2014	2015	2016
Direct to Clearing	Placed (Direct to Clearing)	1%	1%	-7%	0%	8%

A.18 All Placed: Daily net change (from Wales)

Net increase since previous weekday (2016 cycle up to 8 days after A level results day)



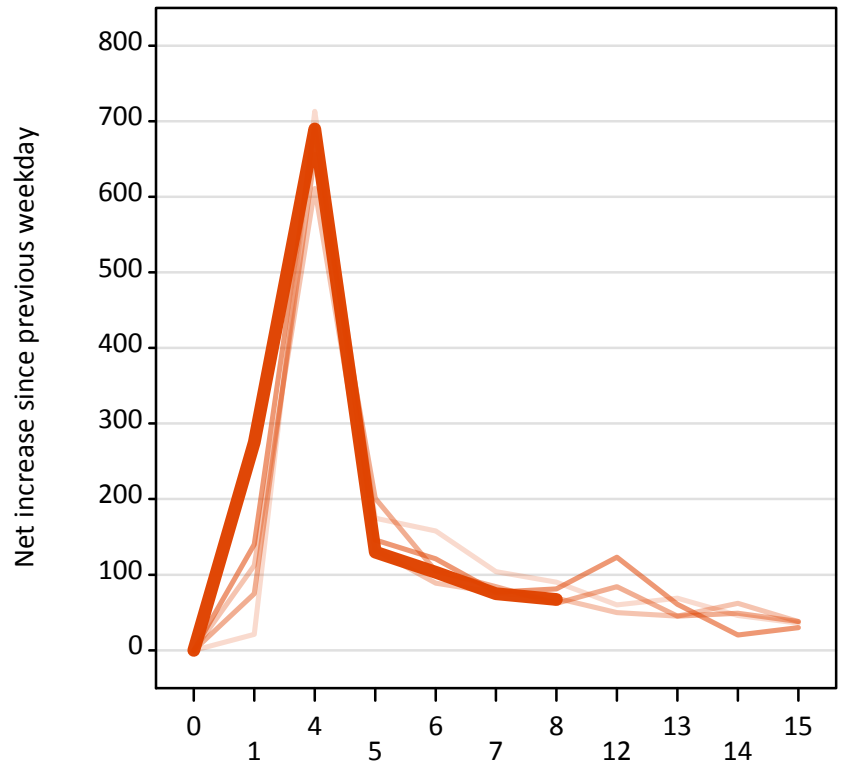
A.19 All Placed: Daily net change (from Wales)

Net increase since previous weekday (2016 cycle up to 8 days after A level results day)

Applicant status, days since A level results day		2012	2013	2014	2015	2016
All Placed	0	0	0	0	0	0
	1	550	730	630	850	880
	4	1,170	970	1,000	1,000	900
	5	330	220	340	260	180
	6	240	250	200	160	130
	7	170	160	140	140	130
	8	160	150	150	150	140
	12	100	100	130	230	
	13	100	80	90	110	
	14	70	90	90	40	
	15	50	70	70	50	

A.20 Placed through Clearing only: Daily net change (from Wales)

Net increase since previous weekday (2016 cycle up to 8 days after A level results day)



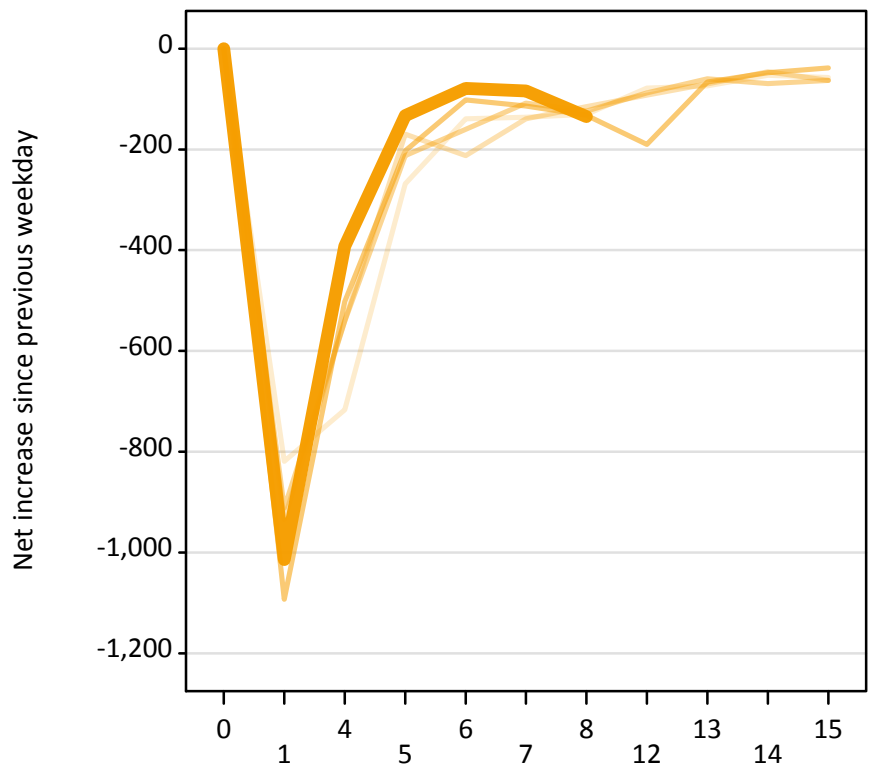
A.21 Placed through Clearing only: Daily net change (from Wales)

Net increase since previous weekday (2016 cycle up to 8 days after A level results day)

Applicant status, days since A level results day		2012	2013	2014	2015	2016
Placed through Clearing only	0	0	0	0	0	0
	1	20	110	80	140	280
	4	710	610	660	690	690
	5	180	130	200	150	130
	6	160	90	110	120	100
	7	100	80	80	80	80
	8	90	70	60	80	70
	12	60	50	80	120	
	13	70	50	50	60	
	14	50	60	50	20	
	15	40	40	40	30	

A.22 Holding Offer: Daily net change (from Wales)

Net increase since previous weekday (2016 cycle up to 8 days after A level results day)



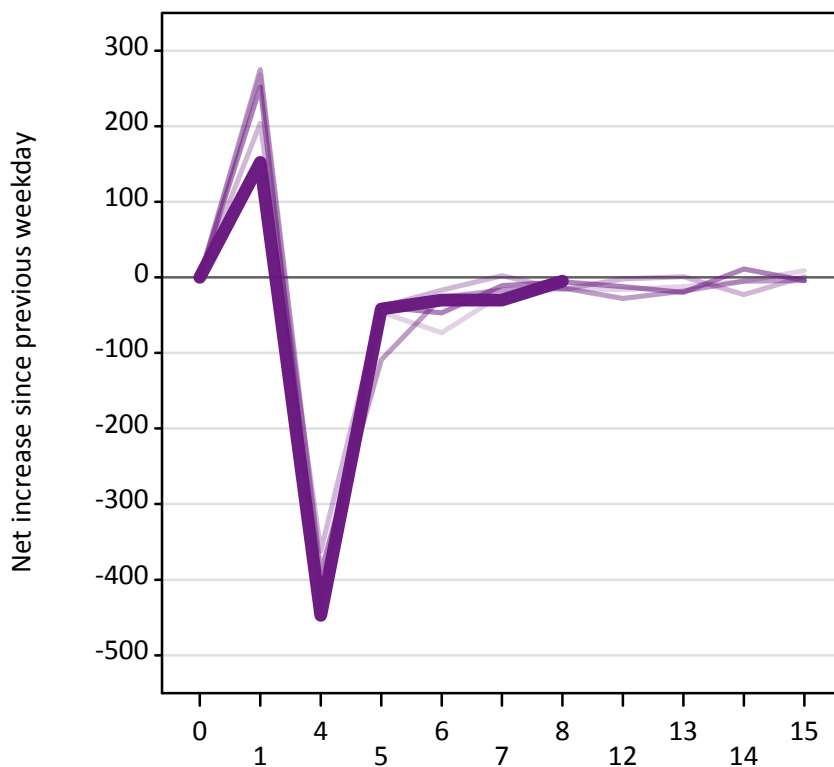
A.23 Holding Offer: Daily net change (from Wales)

Net increase since previous weekday (2016 cycle up to 8 days after A level results day)

Applicant status, days since A level results day		2012	2013	2014	2015	2016
Holding Offer	0	0	0	0	0	0
	1	-820	-930	-910	-1,090	-1,010
	4	-720	-540	-540	-500	-390
	5	-270	-170	-210	-200	-130
	6	-140	-210	-160	-100	-80
	7	-140	-140	-110	-110	-80
	8	-130	-120	-120	-130	-140
	12	-80	-90	-90	-190	
	13	-70	-70	-60	-70	
	14	-50	-50	-70	-50	
	15	-60	-60	-60	-40	

A.24 Free to be placed in Clearing: Daily net change (from Wales)

Net increase since previous weekday (2016 cycle up to 8 days after A level results day)



A.25 Free to be placed in Clearing: Daily net change (from Wales)

Net increase since previous weekday (2016 cycle up to 8 days after A level results day)

Applicant status, days since A level results day		2012	2013	2014	2015	2016
Free to be placed in Clearing	0	0	0	0	0	0
	1	270	200	280	250	150
	4	-400	-360	-390	-440	-450
	5	-50	-40	-110	-40	-40
	6	-70	-20	-30	-50	-30
	7	-20	0	-20	-10	-30
	8	-20	-20	-10	-10	-10
	12	-20	0	-30	-10	
	13	-10	0	-20	-20	
	14	-10	-20	-10	10	
	15	10	0	0	0	